

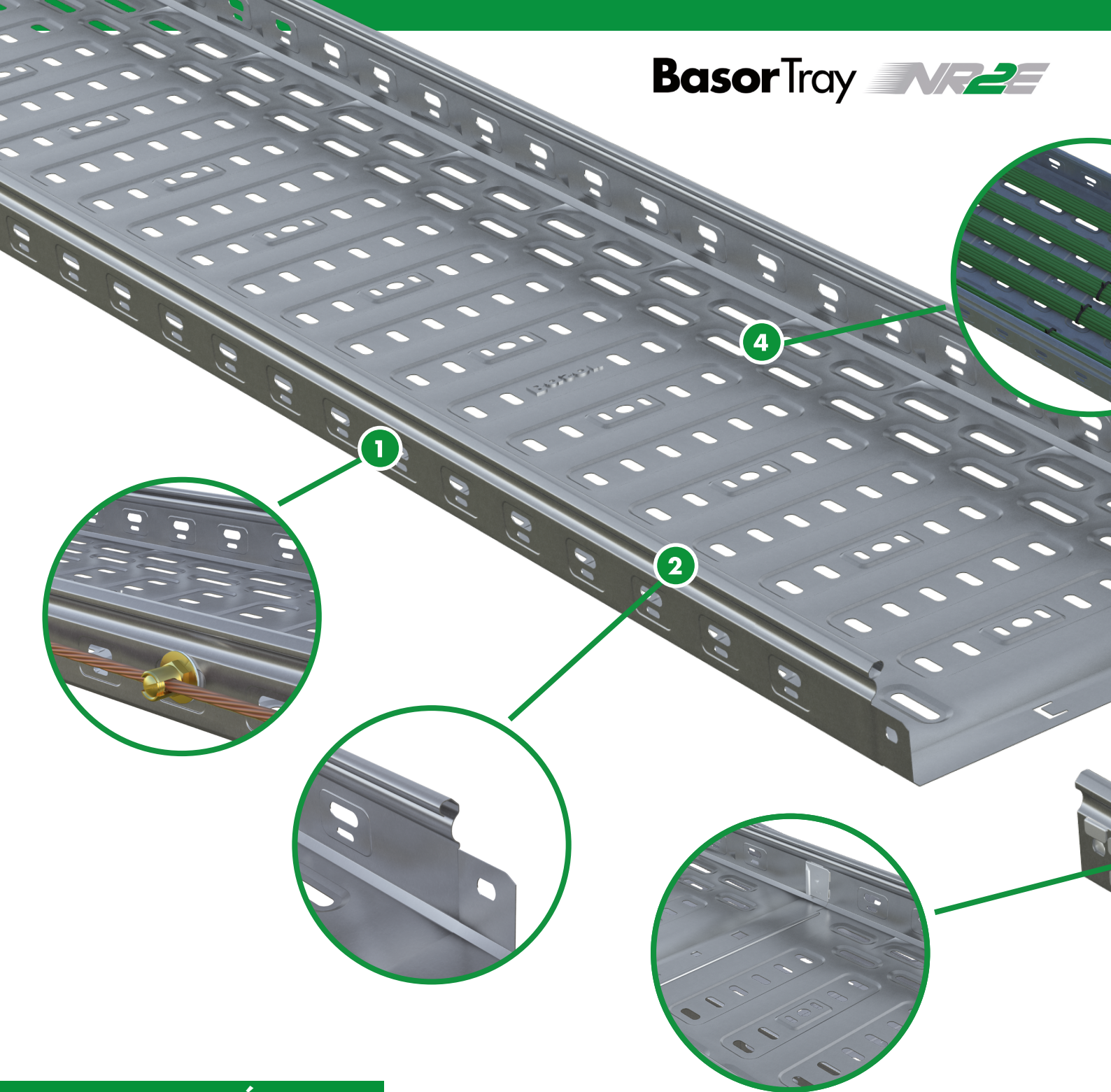


BasorTray NR2E



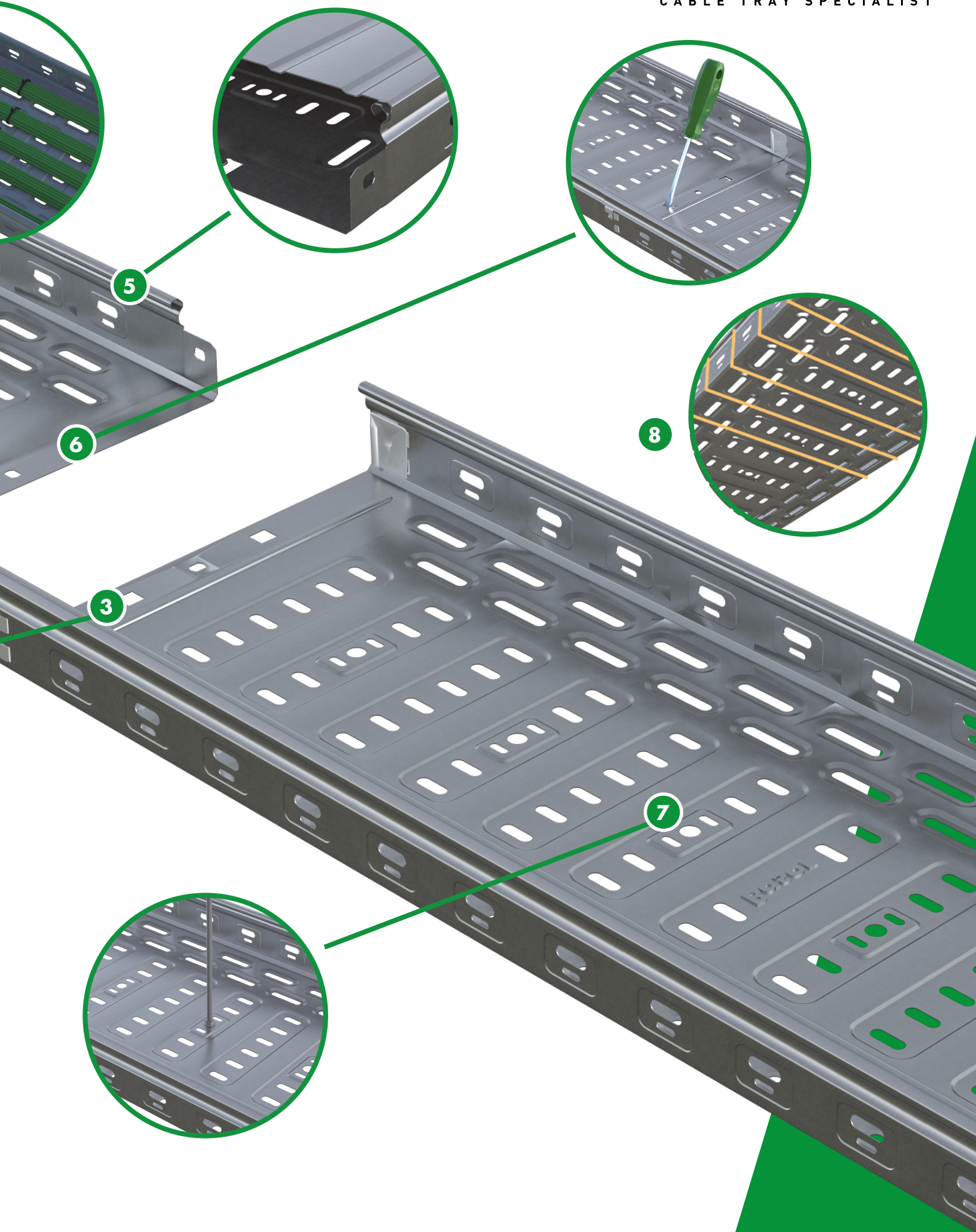
CATÁLOGO RÁPIDO

BE Basor
CABLE TRAY SPECIALIST



CARACTERÍSTICAS

- 1 Colisos en el ala**
Especialmente diseñados para fijar bornas para toma tierra, también permiten embridar cables en el lateral.
- 2 Borde de seguridad**
Borde redondeado que impide que los cables se dañen al ser volcados en la bandeja.
- 3 Nervio salvacables**
La unión entre 2 bandejas queda protegida por un nervio que evita dañar los cables al moverlos.
- 4 Colisos centrales**
Para poder embridar todos los cables de manera sencilla y visualizar el recorrido de los circuitos.
- 5 Tapa a presión**
Gracias al borde redondeado la tapa queda fijada a la bandeja sin pinzas adicionales.
- 6 Sistema enchufable**
No se necesitan tornillos para fijar los tramos, sistema rápido de unión.
- 7 Colisos para varilla**
Ubicados en las posiciones centrales para favorecer el equilibrio al instalar varilla.
- 8 Versatilidad**
La bandeja es simétrica tanto en corte como a la hora de instalar la soportería.



5

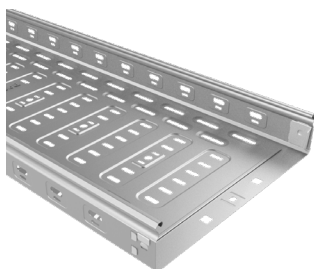
6

3

8

7

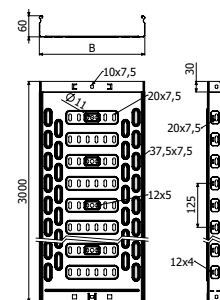
BANDJEA **NR2E H60**



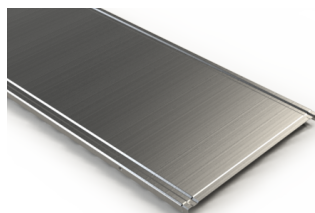
L = 3 m



	B	GS
	mm	REF.
Bandeja P. NR2E 100x60 GS	100	223988
Bandeja P. NR2E 150x60 GS	150	223989
Bandeja P. NR2E 200x60 GS	200	223990
Bandeja P. NR2E 300x60 GS	300	223991
Bandeja P. NR2E 400x60 GS	400	223992
Bandeja P. NR2E 500x60 GS	500	223993
Bandeja P. NR2E 600x60 GS	600	223994



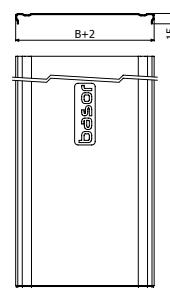
TAPA **TNR2E**



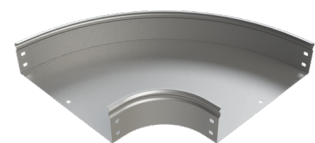
L = 3 m



	B	GS
	mm	REF.
Tapa TNR2E 100 3M GS	100	224841
Tapa TNR2E 150 3M GS	150	224842
Tapa TNR2E 200 3M GS	200	224843
Tapa TNR2E 300 3M GS	300	224844
Tapa TNR2E 400 3M GS	400	224845
Tapa TNR2E 500 3M GS	500	224846
Tapa TNR2E 600 3M GS	600	224847

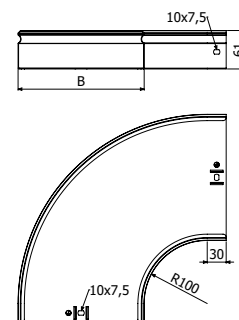


CURVA PLANA **CPNRE 90°**

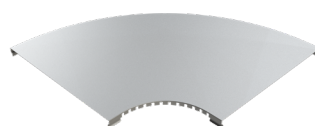


2 x JUNR2E + 4 x B1

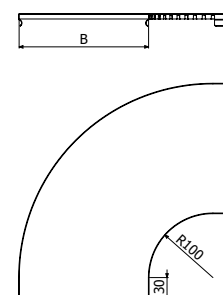
	B	GS
	mm	REF.
Curva plana CPNRE 100x60 GS	100	224035
Curva plana CPNRE 150x60 GS	150	224036
Curva plana CPNRE 200x60 GS	200	224037
Curva plana CPNRE 300x60 GS	300	224038
Curva plana CPNRE 400x60 GS	400	224039
Curva plana CPNRE 500x60 GS	500	224040
Curva plana CPNRE 600x60 GS	600	224041



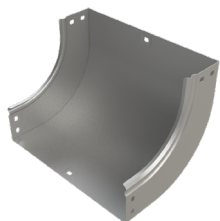
TAPA **TCPNRE 90°**



	B	GS
	mm	REF.
Tapa TCPNRE 100 GS	100	224063
Tapa TCPNRE 150 GS	150	224064
Tapa TCPNRE 200 GS	200	224065
Tapa TCPNRE 300 GS	300	224066
Tapa TCPNRE 400 GS	400	224067
Tapa TCPNRE 500 GS	500	224068
Tapa TCPNRE 600 GS	600	224069

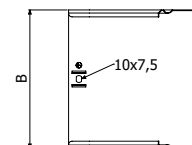
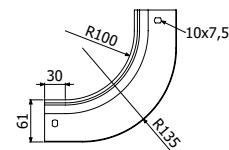


CURVA CÓNCAVA CCNRE 90°

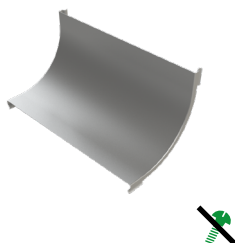


2 x JUNR2E + 4 x B1

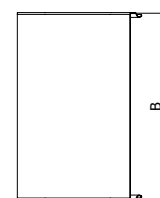
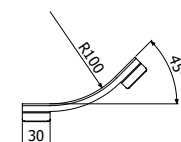
	B	REF. GS
	mm	REF.
C. cóncava CCNRE 100x60 GS	100	224077
C. cóncava CCNRE 150x60 GS	150	224078
C. cóncava CCNRE 200x60 GS	200	224079
C. cóncava CCNRE 300x60 GS	300	224080
C. cóncava CCNRE 400x60 GS	400	224081
C. cóncava CCNRE 500x60 GS	500	224082
C. cóncava CCNRE 600x60 GS	600	224083



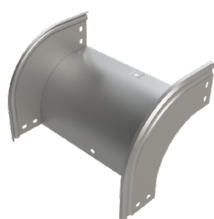
TAPA TCCNRE 90°



	B	GS
	mm	REF.
Tapa TCCNRE 100 GS	100	224105
Tapa TCCNRE 150 GS	150	224106
Tapa TCCNRE 200 GS	200	224107
Tapa TCCNRE 300 GS	300	224108
Tapa TCCNRE 400 GS	400	224109
Tapa TCCNRE 500 GS	500	224110
Tapa TCCNRE 600 GS	600	224111

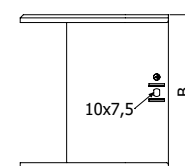
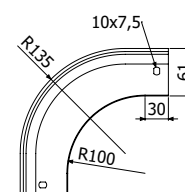


CURVA CONVEXA CXNRE 90°

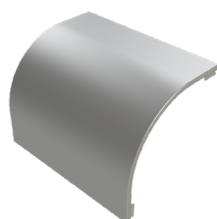


2 x JUNR2E + 4 x B1

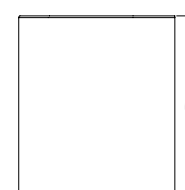
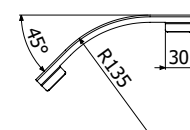
	B	GS
	mm	REF.
C. convexa CXNRE 100x60 GS	100	224119
C. convexa CXNRE 150x60 GS	150	224120
C. convexa CXNRE 200x60 GS	200	224121
C. convexa CXNRE 300x60 GS	300	224122
C. convexa CXNRE 400x60 GS	400	224123
C. convexa CXNRE 500x60 GS	500	224124
C. convexa CXNRE 600x60 GS	600	224125



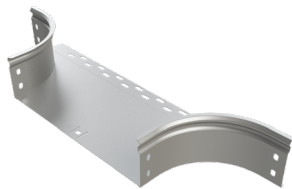
TAPA TCXNRE 90°



	B	GS
	mm	REF.
Tapa TCXNRE 100x60 GS	100	224147
Tapa TCXNRE 150x60 GS	150	224148
Tapa TCXNRE 200x60 GS	200	224149
Tapa TCXNRE 300x60 GS	300	224150
Tapa TCXNRE 400x60 GS	400	224151
Tapa TCXNRE 500x60 GS	500	224152
Tapa TCXNRE 600x60 GS	600	224153

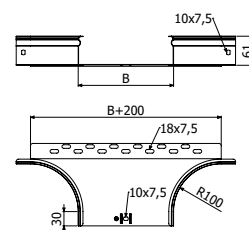


DERIVACIÓN **ASNRE**

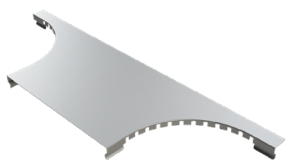


 4 x B1

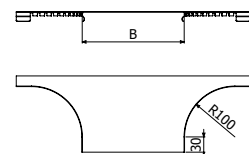
	B	GS
	mm	REF.
Deriv. ASNRE 100x60 GS	100	224223
Deriv. ASNRE 150x60 GS	150	224224
Deriv. ASNRE 200x60 GS	200	224225
Deriv. ASNRE 300x60 GS	300	224226
Deriv. ASNRE 400x60 GS	400	224227
Deriv. ASNRE 500x60 GS	500	224228
Deriv. ASNRE 600x60 GS	600	224229



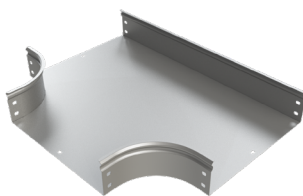
TAPA **TASNRE**



	B	GS
	mm	REF.
Tapa TASNRE 100 GS	100	224237
Tapa TASNRE 150 GS	150	224238
Tapa TASNRE 200 GS	200	224239
Tapa TASNRE 300 GS	300	224240
Tapa TASNRE 400 GS	400	224241
Tapa TASNRE 500 GS	500	224242
Tapa TASNRE 600 GS	600	224243

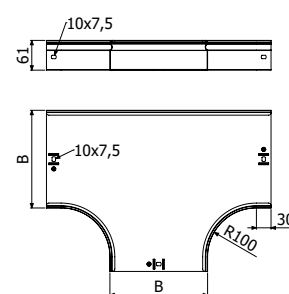


DERIVACIÓN **TENRE**

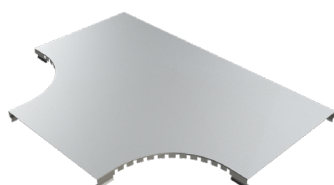


 4 x JUNR2E + 8 x B1

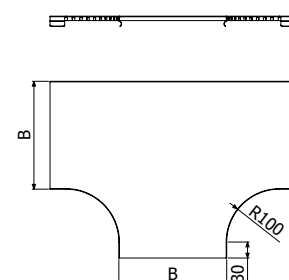
	B	GS
	mm	H60
Deriv. te TENRE 100x60 GS	100	224175
Deriv. te TENRE 150x60 GS	150	224176
Deriv. te TENRE 200x60 GS	200	224177
Deriv. te TENRE 300x60 GS	300	224178
Deriv. te TENRE 400x60 GS	400	224179
Deriv. te TENRE 500x60 GS	500	224180
Deriv. te TENRE 600x60 GS	600	224181



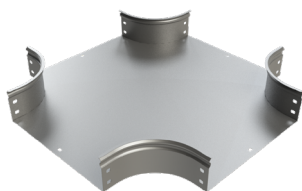
TAPA **TTENRE**



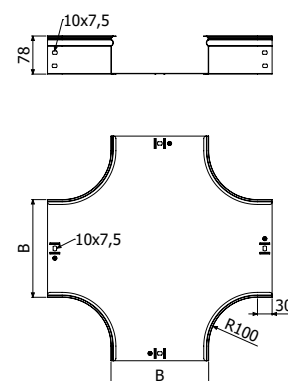
	B	GS
	mm	REF.
Tapa TTENRE 100 GS	100	224189
Tapa TTENRE 150 GS	150	224190
Tapa TTENRE 200 GS	200	224191
Tapa TTENRE 300 GS	300	224192
Tapa TTENRE 400 GS	400	224193
Tapa TTENRE 500 GS	500	224194
Tapa TTENRE 600 GS	600	224195



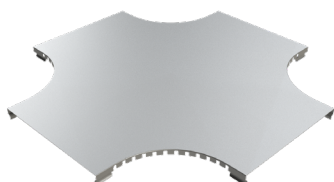
DERIVACIÓN CRNRE



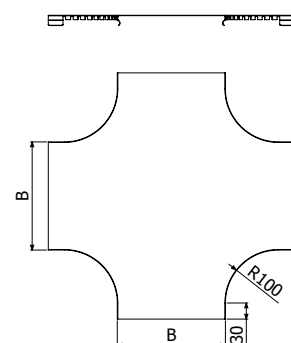
	B	GS
	mm	REF.
Deriv. cruz CRNRE 100x60 GS	100	224196
Deriv. cruz CRNRE 150x60 GS	150	224197
Deriv. cruz CRNRE 200x60 GS	200	224198
Deriv. cruz CRNRE 300x60 GS	300	224199
Deriv. cruz CRNRE 400x60 GS	400	224200
Deriv. cruz CRNRE 500x60 GS	500	224201
Deriv. cruz CRNRE 600x60 GS	600	224202



TAPA TCRNRE



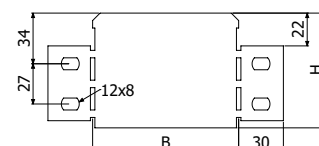
	B	GS
	mm	REF.
Tapa TCRNRE 100 GS	100	224210
Tapa TCRNRE 150 GS	150	224211
Tapa TCRNRE 200 GS	200	224212
Tapa TCRNRE 300 GS	300	224213
Tapa TCRNRE 400 GS	400	224214
Tapa TCRNRE 500 GS	500	224215
Tapa TCRNRE 600 GS	600	224216



RENRE



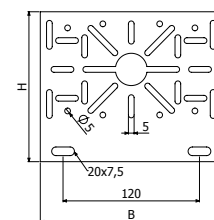
	B	GS
	mm	H60
RENRE-50X60	50	224797
RENRE-100X60	100	224798



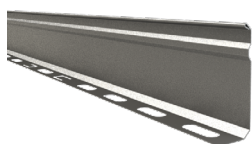
SOPORTE CAJA **SUCP**



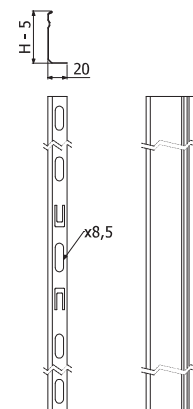
	B	GS
	mm	REF.
Soporte caja SUCP GS	100	214255



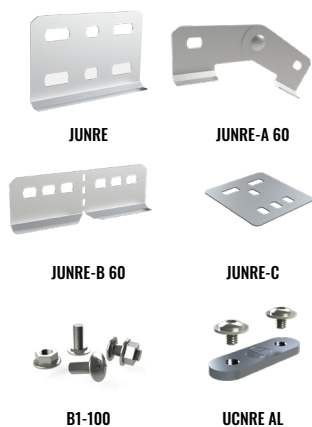
PERFIL SEPARADOR **PS**



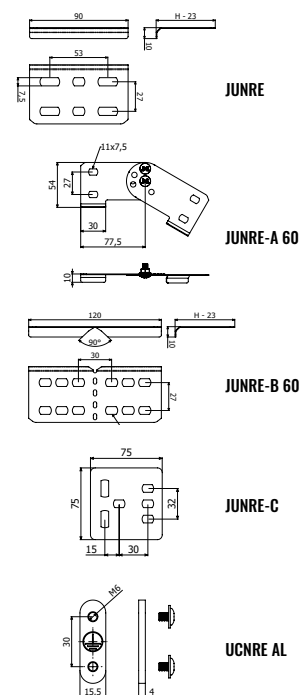
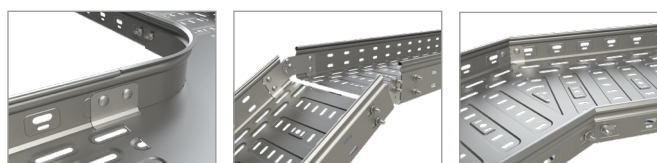
	B	GS
	mm	REF.
Perfil separador PS 60 GS	3000	202066



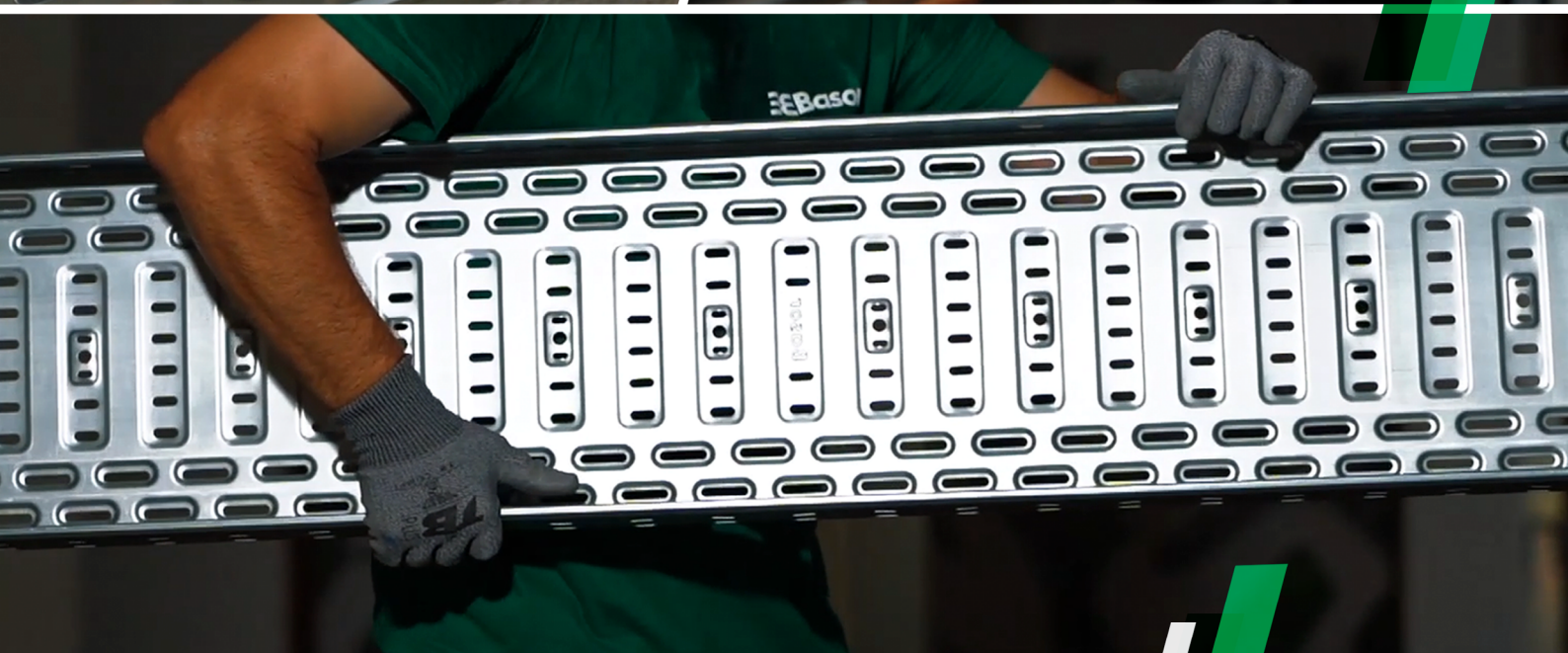
ACCORIOS DE UNIÓN



	GS
	H60
Unión JUNRE H60 GS	224217
Unión articulada v. JUNRE-A H60 GS	224219
Unión articulada h. JUNRE-B H60 GS	224221
Unión JUNRE-C GS	224252
Kit unión continuidad UCNRE AL	224861
Pack 100u. Conjunto B1 EZ	204356



BE Basor
CABLE TRAY SPECIALIST



ESCANEA EL CÓDIGO QR

Descubre el vídeo oficial

BasorTray *NR2E*

NOTAS

A large rectangular area filled with a fine grid pattern, intended for taking notes or drawing technical diagrams. The grid consists of small, uniform squares covering the entire page area below the header and title.



SÍGUENOS EN LAS REDES SOCIALES

SÍGUENOS EN
LinkedIn



@Basor Electric SA

SÍGUENOS EN
YouTube



@BasorElectric

SÍGUENOS EN




@BasorElectric

3E Basor

CABLE TRAY SPECIALIST

Basor Electric SA

Avenida Alcodar 45,
Polígono Industrial Alcodar
46701 Gandia (Valencia) - España

Tel. (+34) 96 287 66 95
basor@basor.com

FOLLOW US ON SOCIAL NETWORKS



LinkedIn



YouTube



twitter