

3E Basor
CABLE TRAY SPECIALIST

SHIPBUILDING
CONSTRUCCIÓN NAVAL

Shipbuilding

Shipbuilding is the expression of the Naval Engineering and it involves the construction, repairation and renewing of ships or all kind of floating vessels.

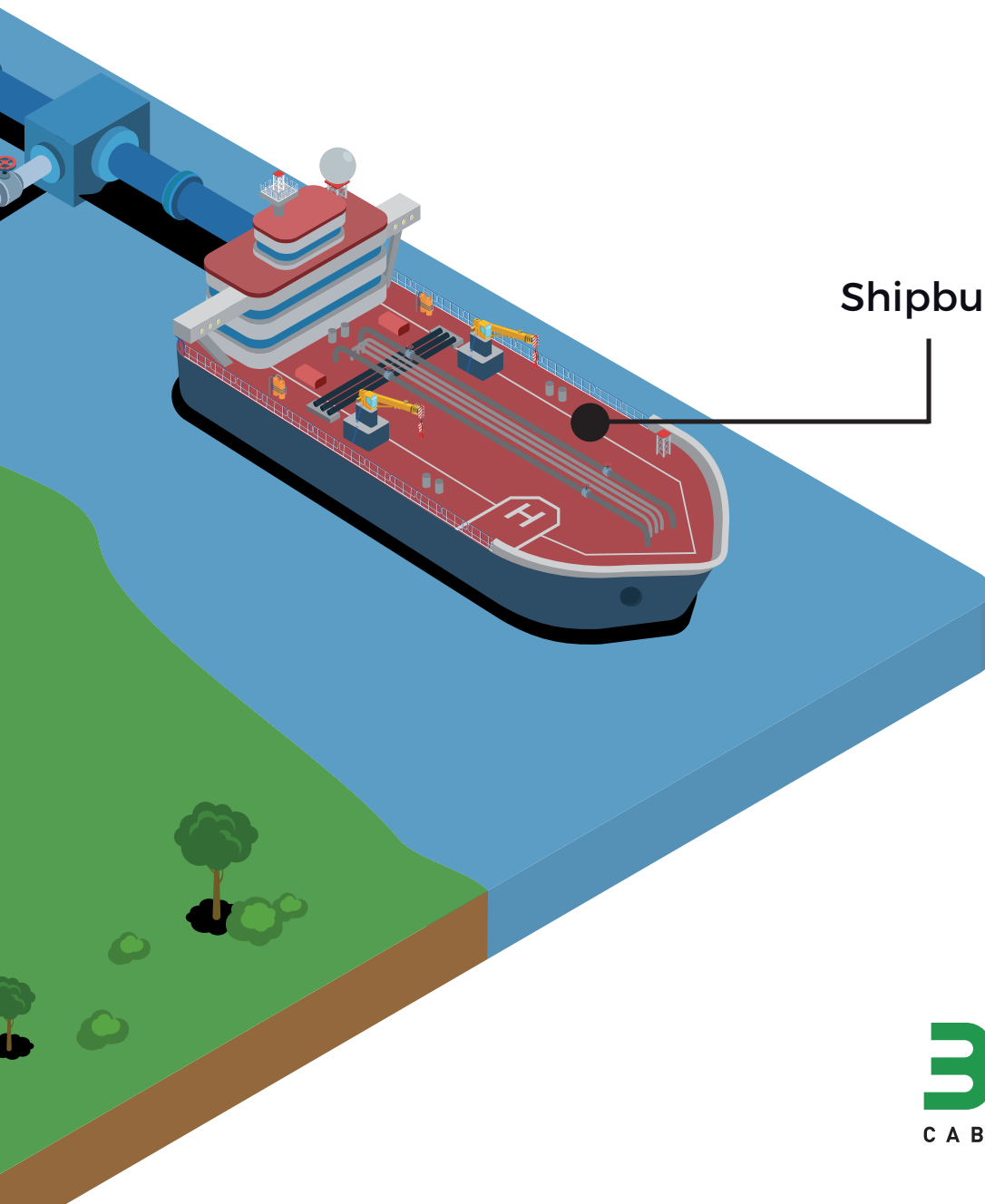
This industry is normally located at coastal areas called shipyards.

The shipbuilding industry deals with the production of larger vessels intended for the merchant fleet (cargo or passenger transport), the off-shore energy industry or military purposes. This sector needs products for their electrical installations such as cable trays with the best quality, most advanced safety and the largest durability.

Construcción naval es como se conoce coloquialmente a la Ingeniería Naval y esto significa la construcción, reparación y renovación de los barcos o de todo tipo de embarcaciones flotantes.

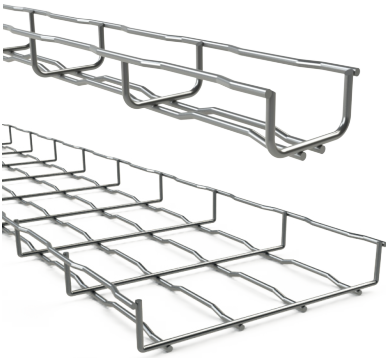
Normalmente esta industria está localizada en zonas costeras denominadas astilleros.

La industria de la construcción naval gestiona la producción de grandes embarcaciones para el transporte (de mercancías o pasajeros), la refinería de crudo o el sector militar. Estos campos de fabricación demandan productos para las instalaciones eléctricas con la mejor calidad, la seguridad más avanzada y una larga duración.

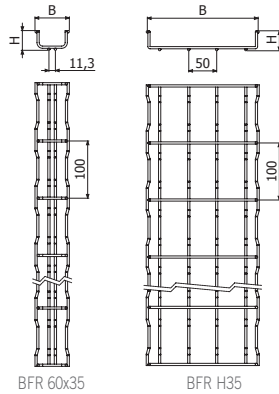


Shipbuilding

BASORFIL BFR ALTURA/HIGH 35mm



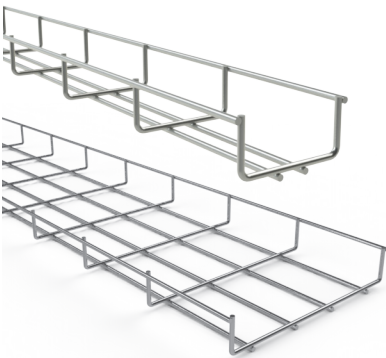
Descripción	mm		Bandeja de hilo / Basket tray			
	mm	mm	EZ	GC/HDG	i304	i316
BFR 60x35	60	35	2/6407	2/8230	2/6516	2/8233
BFR 100x35	100	35	2/3616	2/0286	2/0303	2/7415
BFR 150x35	150	35	2/3617	2/0287	2/0304	2/7416
BFR 200x35	200	35	2/3618	2/0288	2/0305	2/7417
BFR 300x35	300	35	2/3619	2/0289	2/0306	2/7418



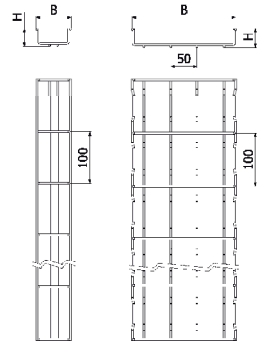
60-100-150-200 x 2 CGBF (2/4364-EZ, 2/4360-GC, 2/4915-i304, 2/5359-i316)
 300 x 3 CGBF (2/4364-EZ, 2/4360-GC, 2/4915-i304, 2/5359-i316)



BASORFIL BF ALTURA/HIGH 25mm



Descripción	mm		Hilo / Basket
	mm	mm	GC/HDG
BF 70x25	70	25	9/02166
BF 100x25	100	25	9/02167
BF 150x25	150	25	2/02168
BF 200x25	200	25	9/02169
BF 250x25	250	25	9/02170
BF 300x25	300	25	9/02171



3000mm



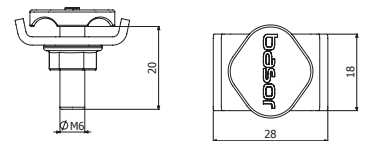
70-100-150-200 x 2 CGBF (2/4360-GC)
 300 x 3 CGBF (2/4360-GC)



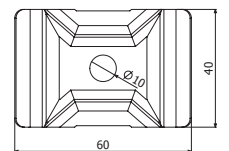
BASORFIL ACCESORIOS/ACCESSORIES



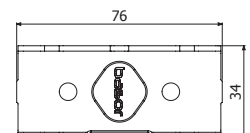
Descripción	Conjunto Grapa / Bolt staple set			
	EZ	GC/HDG	i304	i316
GBF	2/4364	2/4360	2/4915	2/5358



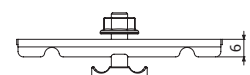
Descripción	Suspensión central / Central hager			
	EZ	GC/HDG	i304	i316
SSC	2/2064	2/0363	2/0373	2/18553



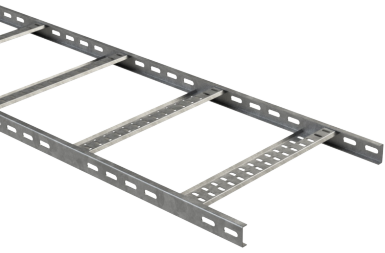
Descripción	Unión lateral / Side union		
	EZ	GC/HDG	i304
ULA	2/4919	2/4363	2/4921



Descripción	Encajable ULA / Stackable ULA		
	GC/HDG		
E-ULA	9/02172		



BASORTRAV EML ALTURA/HIGH 40mm

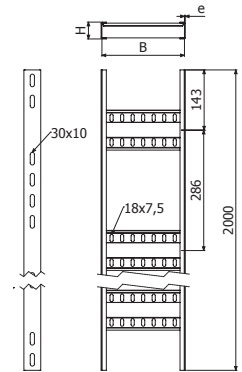


2000mm

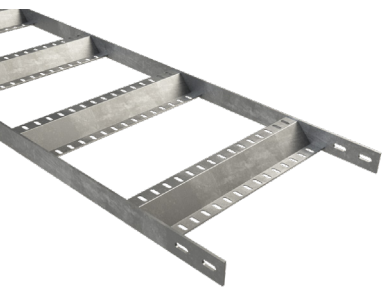


Descripción	↔	↕	Escalera/Ladder
	mm	mm	
EML 100x40	100	40	2/11265
EML 200x40	200	40	2/11266
EML 300x40	300	40	2/11267
EML 400x40	400	40	2/11268
EML 500x40	500	40	2/11269
EML 600x40	600	40	2/11270

100-600 x 2 JUEML (2/10179-CS)



BASORTRAV EMS ALTURA/HIGH 50mm

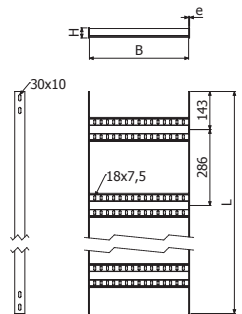


2000mm



Descripción	↔	↕	Escalera/Ladder
	mm	mm	
EMS 100x50	100	50	2/17273
EMS 200x50	200	50	2/17274
EMS 300x50	300	50	2/17275
EMS 400x50	400	50	2/17276
EMS 500x50	500	50	2/17277
EMS 600x50	600	50	2/17278

100-600 x 2 JUEMS (2/17279-CS)



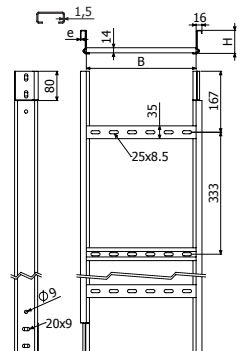
BASORTRAV FE ALTURA/HIGH 60mm



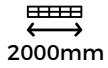
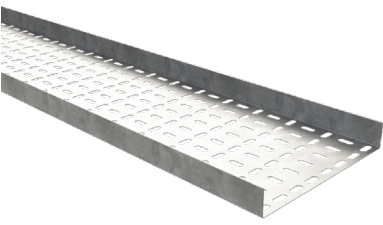
3000mm



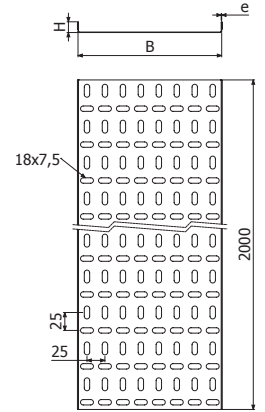
Descripción	↔	↕	Escalera/Ladder
	mm	mm	
FE 100x60	100	60	2/0749
FE 160x60	150	60	2/0750
FE 200x60	200	60	2/0751
FE 300x60	300	60	2/0752
FE 400x60	400	60	2/0753
FE 500x60	500	60	2/0754
FE 600x60	600	60	2/0755



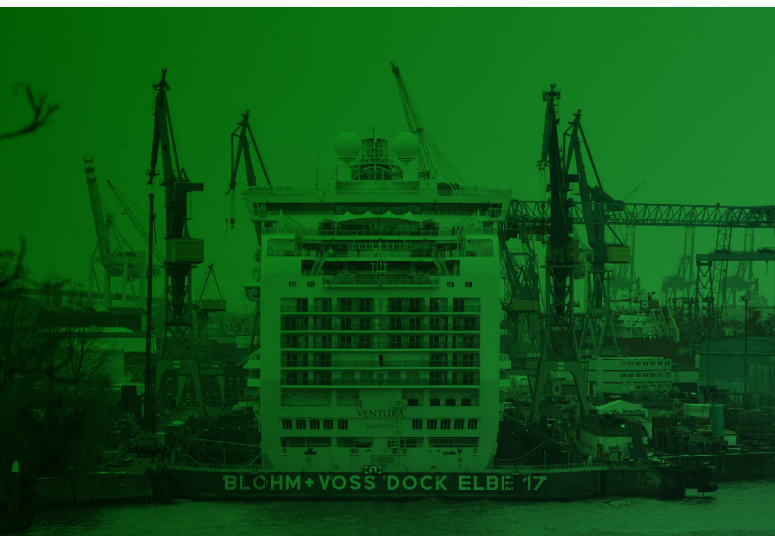
BASORTRAY EB ALTURA/HIGH 10/15/30mm



Descripción	↔	↕	Bandeja de chapa / Cable tray	
	mm	mm	GS	i304
EB 50x10	50	10	2/17173	2/17183
EB 80x10	80	10	2/17174	2/17184
EB 100x15	100	15	2/17175	2/17185
EB 150x15	150	15	2/17176	2/17186
EB 200x15	200	15	2/17177	2/17187
EB 250x30	250	30	2/17178	2/17188
EB 300x30	300	30	2/17179	2/17189
EB 400x30	400	30	2/17180	2/17190
EB 500x30	500	30	2/17181	2/17191
EB 600x30	600	30	2/17182	2/17192



50-80-100-150 x 2 JUEB 10-15 (2/17269-GS , 2/17271-i304)
300-400-500-600 x 2 JUEB 30 (2/17269-GS , 2/17271-i304)



BEGREEN
CableManagementSystems

BE Basor
CABLE TRAY SPECIALIST

BASOR ELECTRIC S.A Headquarters

Avenida Alcodar 45-47
46701 Gandia SPAIN

+34 962876695
basor@basor.com
www.basor.com


@basorelectric


[www.linkedin.com/
company/basor-electric-sa](http://www.linkedin.com/company/basor-electric-sa)


[www.youtube.com/user/
basorelectric](http://www.youtube.com/user/basorelectric)