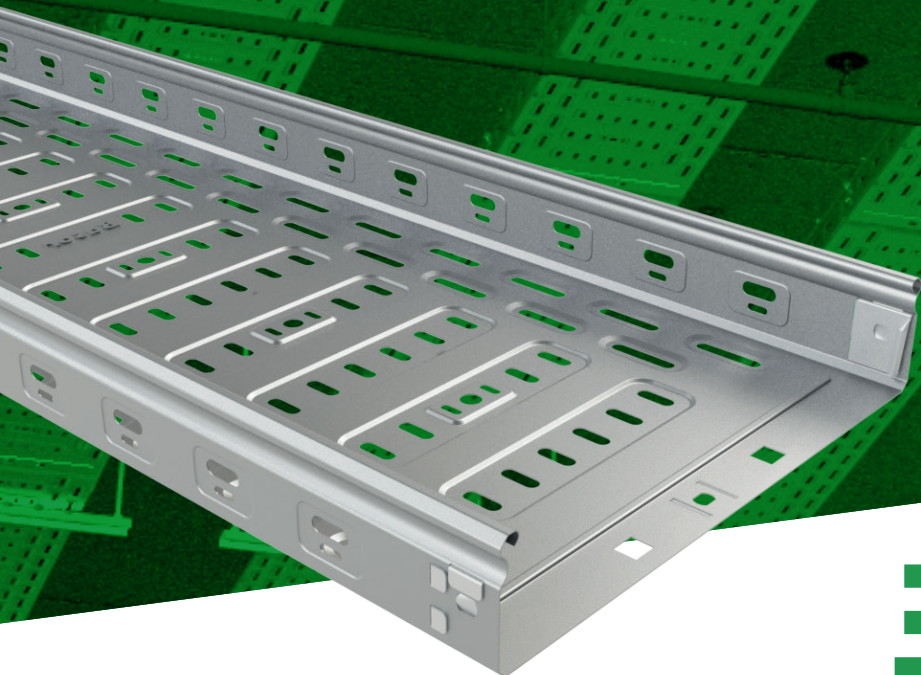
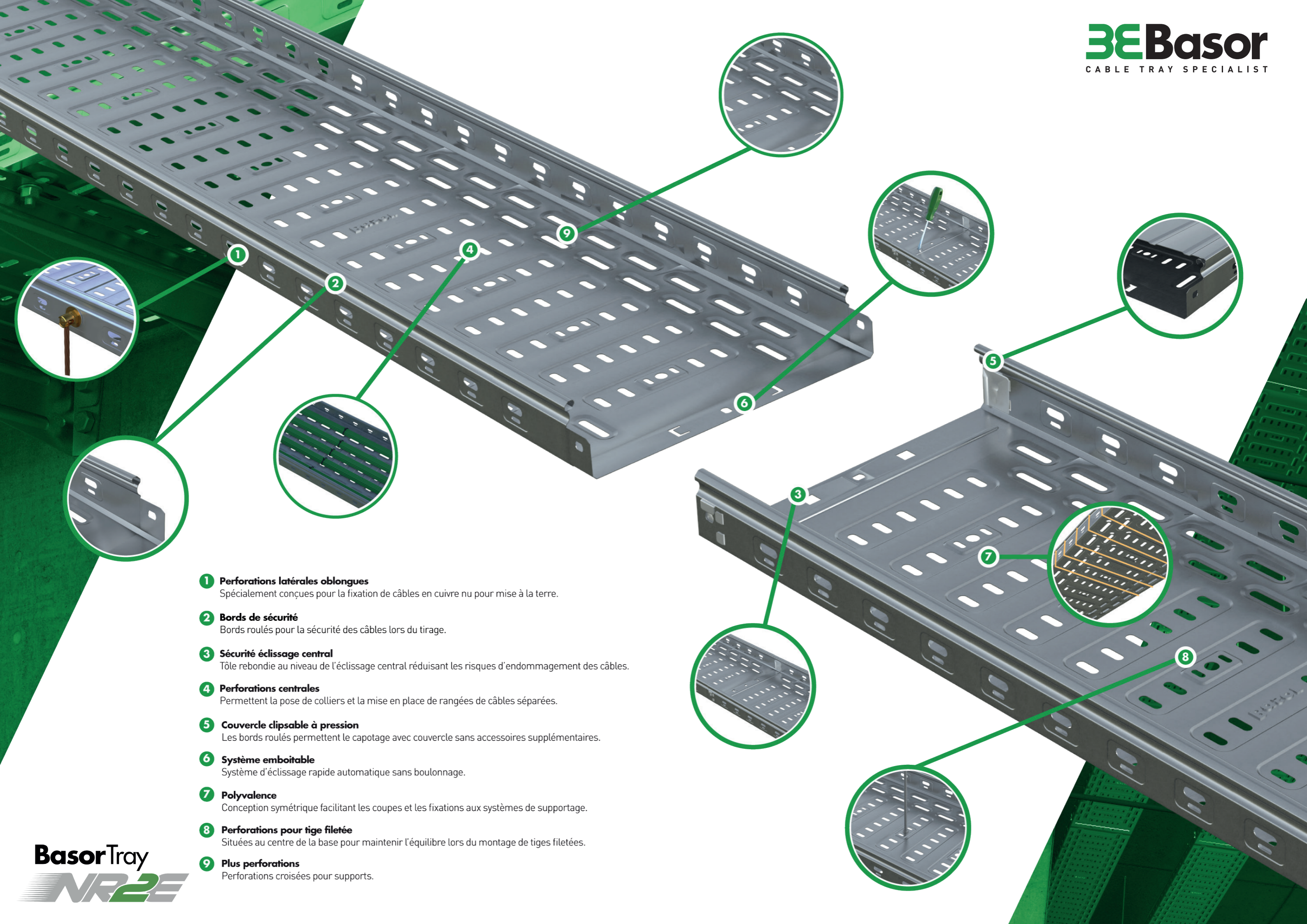


Basor Tray **NR2E**

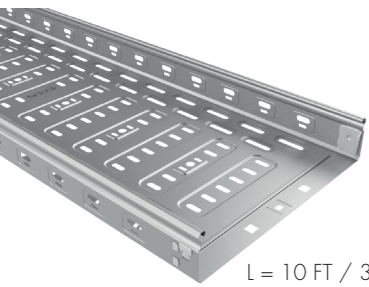


3E Basor
CABLE TRAY SPECIALIST



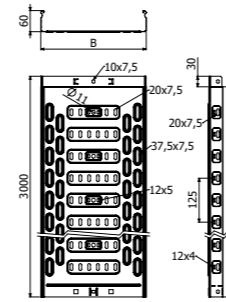
- 1 Perforations latérales oblongues**
Spécialement conçues pour la fixation de câbles en cuivre nu pour mise à la terre.
- 2 Bords de sécurité**
Bords roulés pour la sécurité des câbles lors du tirage.
- 3 Sécurité éclissage central**
Tôle rebondie au niveau de l'éclissage central réduisant les risques d'endommagement des câbles.
- 4 Perforations centrales**
Permettent la pose de colliers et la mise en place de rangées de câbles séparées.
- 5 Couvercle clipsable à pression**
Les bords roulés permettent le capotage avec couvercle sans accessoires supplémentaires.
- 6 Système emboîtable**
Système d'éclissage rapide automatique sans boulonnage.
- 7 Polyvalence**
Conception symétrique facilitant les coupes et les fixations aux systèmes de supportage.
- 8 Perforations pour tige filetée**
Situées au centre de la base pour maintenir l'équilibre lors du montage de tiges filetées.
- 9 Plus perforations**
Perforations croisées pour supports.

NR2E H60

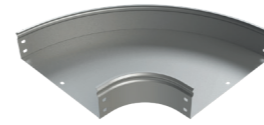


L = 10 FT / 3 m

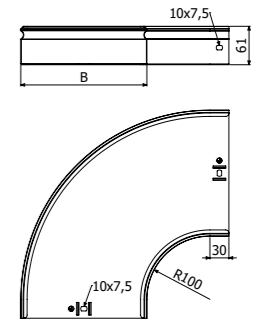
| | B | | Réf. GS |
|-------------|------|-----|---------|
| | inch | mm | |
| NR2E 100X60 | 4" | 100 | 223988 |
| NR2E 150X60 | 6" | 150 | 223989 |
| NR2E 200X60 | 8" | 200 | 223990 |
| NR2E 300X60 | 12" | 300 | 223991 |
| NR2E 400X60 | 16" | 400 | 223992 |
| NR2E 500X60 | 20" | 500 | 223993 |
| NR2E 600X60 | 24" | 600 | 223994 |



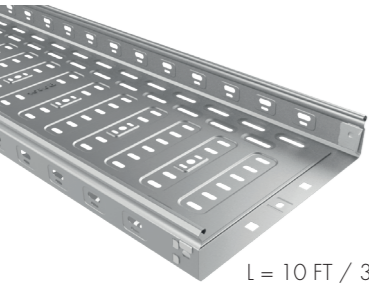
CPNRE 90°



| | B | | Réf. GS |
|------------------|------|-----|---------|
| | inch | mm | |
| CPNRE 90° 100X60 | 4" | 100 | 224035 |
| CPNRE 90° 150X60 | 6" | 150 | 224036 |
| CPNRE 90° 200X60 | 8" | 200 | 224037 |
| CPNRE 90° 300X60 | 12" | 300 | 224038 |
| CPNRE 90° 400X60 | 16" | 400 | 224039 |
| CPNRE 90° 500X60 | 20" | 500 | 224040 |
| CPNRE 90° 600X60 | 24" | 600 | 224041 |

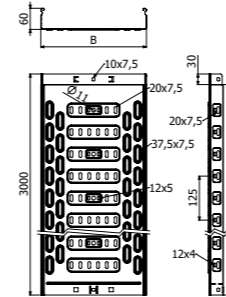


NE2E H60



L = 10 FT / 3 m

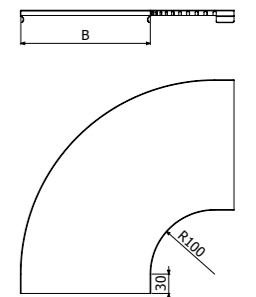
| | B | | Réf. GS |
|-------------|------|-----|---------|
| | inch | mm | |
| NE2E 100X60 | 4" | 100 | 224333 |
| NE2E 150X60 | 6" | 150 | 224334 |
| NE2E 200X60 | 8" | 200 | 224335 |
| NE2E 300X60 | 12" | 300 | 224336 |



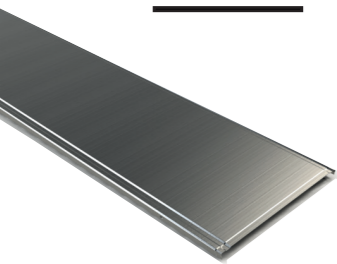
TCPNRE 90°



| | B | | Réf. GS |
|----------------|------|-----|---------|
| | inch | mm | |
| 90° TCPNRE 100 | 4" | 100 | 224063 |
| 90° TCPNRE 150 | 6" | 150 | 224064 |
| 90° TCPNRE 200 | 8" | 200 | 224065 |
| 90° TCPNRE 300 | 12" | 300 | 224066 |
| 90° TCPNRE 400 | 16" | 400 | 224067 |
| 90° TCPNRE 500 | 20" | 500 | 224068 |
| 90° TCPNRE 600 | 24" | 600 | 224069 |

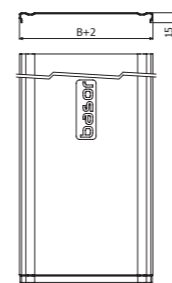


TNR2E

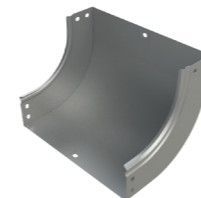


L = 10 FT / 3 m

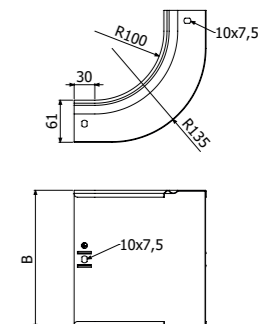
| | Larghezza | | Réf. GS |
|-----------|-----------|-----|---------|
| | inch | mm | |
| TNR2E 100 | 4" | 100 | 224841 |
| TNR2E 150 | 6" | 150 | 224842 |
| TNR2E 200 | 8" | 200 | 224843 |
| TNR2E 300 | 12" | 300 | 224844 |
| TNR2E 400 | 16" | 400 | 224845 |
| TNR2E 500 | 20" | 500 | 224846 |
| TNR2E 600 | 24" | 600 | 224847 |



CCNRE 90°



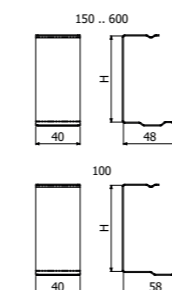
| | B | | Réf. GS |
|------------------|------|-----|---------|
| | inch | mm | |
| CCNRE 90° 100X60 | 4" | 100 | 224077 |
| CCNRE 90° 150X60 | 6" | 150 | 224078 |
| CCNRE 90° 200X60 | 8" | 200 | 224079 |
| CCNRE 90° 300X60 | 12" | 300 | 224080 |
| CCNRE 90° 400X60 | 16" | 400 | 224081 |
| CCNRE 90° 500X60 | 20" | 500 | 224082 |
| CCNRE 90° 600X60 | 24" | 600 | 224083 |



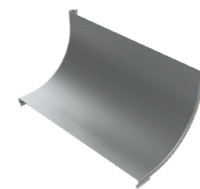
PTNRE



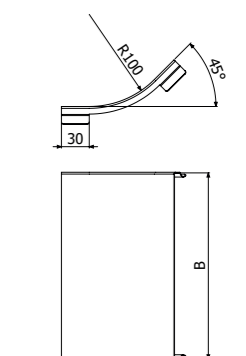
| | INOX |
|------------------|--------|
| PTNRE 100x60 | 224848 |
| PTNRE 150-600x60 | 224849 |



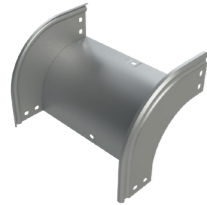
TCCNRE 90°



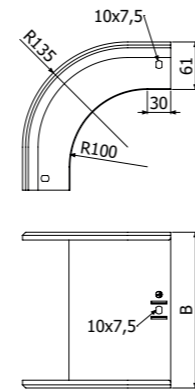
| | B | | Réf. GS |
|----------------|------|-----|---------|
| | inch | mm | |
| 90° TCCNRE 100 | 4" | 100 | 224105 |
| 90° TCCNRE 150 | 6" | 150 | 224106 |
| 90° TCCNRE 200 | 8" | 200 | 224107 |
| 90° TCCNRE 300 | 12" | 300 | 224108 |
| 90° TCCNRE 400 | 16" | 400 | 224109 |
| 90° TCCNRE 500 | 20" | 500 | 224110 |
| 90° TCCNRE 600 | 24" | 600 | 224111 |



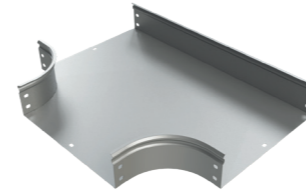
CXNRE 90°



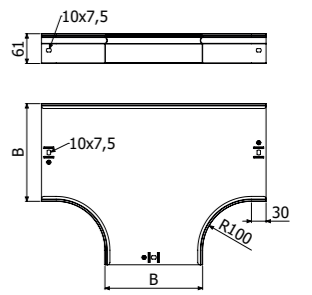
| | B | | Réf. GS |
|------------------|------|-----|---------|
| | inch | mm | |
| CXNRE 90° 100X60 | 4" | 100 | 224119 |
| CXNRE 90° 150X60 | 6" | 150 | 224120 |
| CXNRE 90° 200X60 | 8" | 200 | 224121 |
| CXNRE 90° 300X60 | 12" | 300 | 224122 |
| CXNRE 90° 400X60 | 16" | 400 | 224123 |
| CXNRE 90° 500X60 | 20" | 500 | 224124 |
| CXNRE 90° 600X60 | 24" | 600 | 224125 |



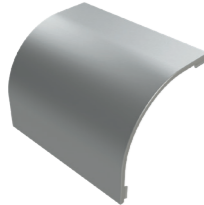
TENRE



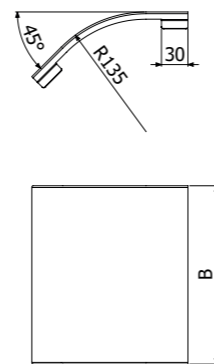
| | B | | Réf. GS |
|--------------|------|-----|---------|
| | inch | mm | |
| TENRE 100X60 | 4" | 100 | 224175 |
| TENRE 150X60 | 6" | 150 | 224176 |
| TENRE 200X60 | 8" | 200 | 224177 |
| TENRE 300X60 | 12" | 300 | 224178 |
| TENRE 400X60 | 16" | 400 | 224179 |
| TENRE 500X60 | 20" | 500 | 224180 |
| TENRE 600X60 | 24" | 600 | 224181 |



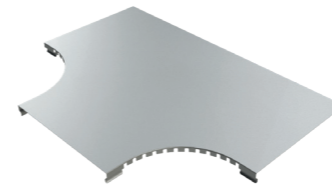
TCXNRE 90°



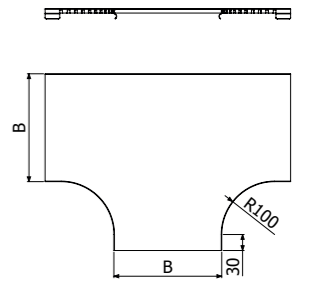
| | B | | Réf. GS |
|----------------|------|-----|---------|
| | inch | mm | |
| 90° TCXNRE 100 | 4" | 100 | 224147 |
| 90° TCXNRE 150 | 6" | 150 | 224148 |
| 90° TCXNRE 200 | 8" | 200 | 224149 |
| 90° TCXNRE 300 | 12" | 300 | 224150 |
| 90° TCXNRE 400 | 16" | 400 | 224151 |
| 90° TCXNRE 500 | 20" | 500 | 224152 |
| 90° TCXNRE 600 | 24" | 600 | 224153 |



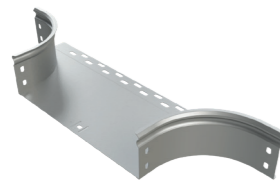
TTNRE



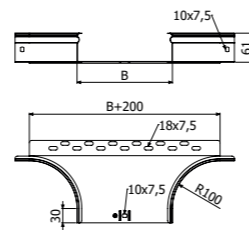
| | B | | Réf. GS |
|-----------|------|-----|---------|
| | inch | mm | |
| TTNRE 100 | 4" | 100 | 224189 |
| TTNRE 150 | 6" | 150 | 224190 |
| TTNRE 200 | 8" | 200 | 224191 |
| TTNRE 300 | 12" | 300 | 224192 |
| TTNRE 400 | 16" | 400 | 224193 |
| TTNRE 500 | 20" | 500 | 224194 |
| TTNRE 600 | 24" | 600 | 224195 |



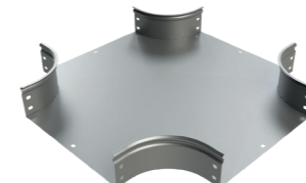
ASNRE



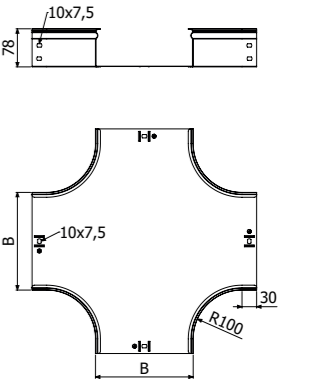
| | B | | Réf. GS |
|--------------|------|-----|---------|
| | inch | mm | |
| ASNRE 100X60 | 4" | 100 | 224223 |
| ASNRE 150X60 | 6" | 150 | 224224 |
| ASNRE 200X60 | 8" | 200 | 224225 |
| ASNRE 300X60 | 12" | 300 | 224226 |
| ASNRE 400X60 | 16" | 400 | 224227 |
| ASNRE 500X60 | 20" | 500 | 224228 |
| ASNRE 600X60 | 24" | 600 | 224229 |



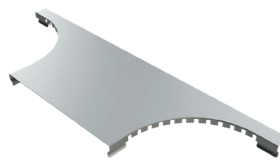
CRNRE



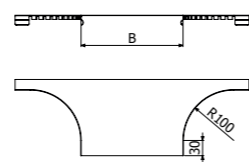
| | B | | Réf. GS |
|--------------|------|-----|---------|
| | inch | mm | |
| CRNRE 100X60 | 4" | 100 | 224196 |
| CRNRE 150X60 | 6" | 150 | 224197 |
| CRNRE 200X60 | 8" | 200 | 224198 |
| CRNRE 300X60 | 12" | 300 | 224199 |
| CRNRE 400X60 | 16" | 400 | 224200 |
| CRNRE 500X60 | 20" | 500 | 224201 |
| CRNRE 600X60 | 24" | 600 | 224202 |



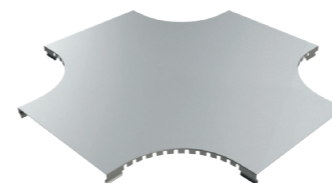
TASNRE



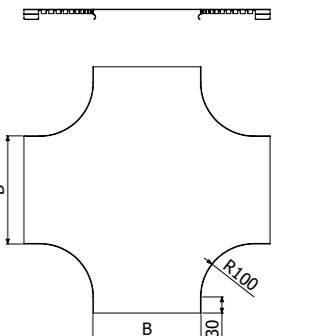
| | B | | Réf. GS |
|------------|------|-----|---------|
| | inch | mm | |
| TASNRE 100 | 4" | 100 | 224237 |
| TASNRE 150 | 6" | 150 | 224238 |
| TASNRE 200 | 8" | 200 | 224239 |
| TASNRE 300 | 12" | 300 | 224240 |
| TASNRE 400 | 16" | 400 | 224241 |
| TASNRE 500 | 20" | 500 | 224242 |
| TASNRE 600 | 24" | 600 | 224243 |



TCRNRE



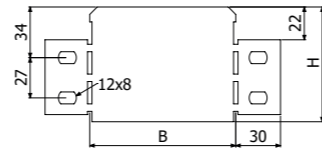
| | B | | Réf. GS |
|------------|------|-----|---------|
| | inch | mm | |
| TCRNRE 100 | 4" | 100 | 224210 |
| TCRNRE 150 | 6" | 150 | 224211 |
| TCRNRE 200 | 8" | 200 | 224212 |
| TCRNRE 300 | 12" | 300 | 224213 |
| TCRNRE 400 | 16" | 400 | 224214 |
| TCRNRE 500 | 20" | 500 | 224215 |
| TCRNRE 600 | 24" | 600 | 224216 |



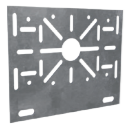
RENRE



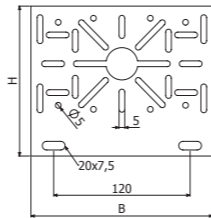
| | B | | Réf. GS |
|--------------|------|-----|---------|
| | inch | mm | |
| RENRE-50X60 | 2" | 50 | 224797 |
| RENRE-100X60 | 4" | 100 | 224798 |



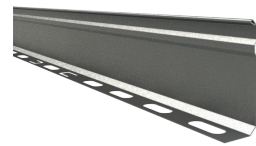
SUCP



| | Réf. GS |
|------|---------|
| SUCP | 214255 |

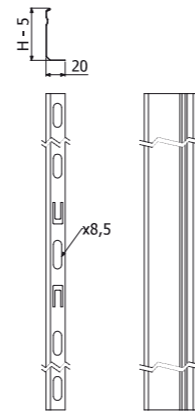


PS



L = 10 FT / 3 m

| | Réf. GS |
|--------|---------|
| PS H60 | 202066 |



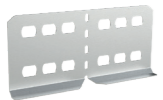
ARTICULATIONS



JUNRE



JUNRE-A



JUNRE-B



JUNRE-C



UCNRE AL

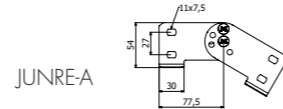
| | REF. PG |
|-------------|---------|
| JUNRE H60 | 224217 |
| JUNRE-A H60 | 224219 |
| JUNRE-B H60 | 224220 |
| JUNRE-C H60 | 224852 |
| UCNRE AL | 224861 |
| B1 | 204356 |



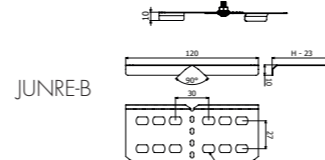
B-1



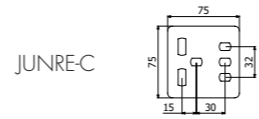
JUNRE



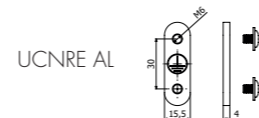
JUNRE-A



JUNRE-B



JUNRE-C



UCNRE AL



The image shows a close-up, high-angle view of a grey metal cable tray system installed on a concrete ceiling. The tray is perforated with a grid of small rectangular holes. It is supported by several white plastic hangers. A thick red cable runs horizontally across the tray. The background is a grey concrete ceiling with visible expansion joints.

Basor Tray NR2E

Basor France
200 Chaussée Jules César Bat
A4 95250,
BEAUCHAMP (France)
Téléphone: +33 01 3978 4982
basorelectric@basor.com