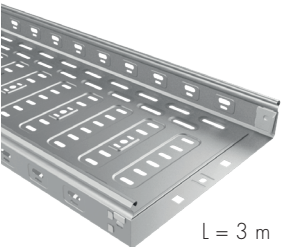


**CARACTÉRISTIQUES**

- 1 Perforations latérales oblongues
- 2 Bords de sécurité
- 3 Système emboîtable
- 4 Perforations centrales
- 5 Couvercle clipsable à pression
- 6 Sécurité éclissage central
- 7 Symétrie
- 8 Perforations pour tige filetée

Nouvelle dalle métallique aux *solutions polyvalentes* pour l'acheminement des câbles

**NR2E H60**

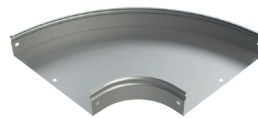


L = 3 m



Chemin de câbles	B mm	RÉF. GS
NR2E 100X60	100	223988
NR2E 150X60	150	223989
NR2E 200X60	200	223990
NR2E 300X60	300	223991
NR2E 400X60	400	223992
NR2E 500X60	500	223993
NR2E 600X60	600	223994

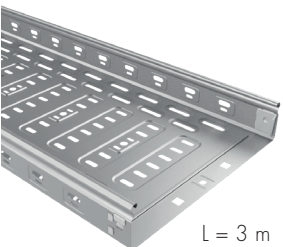
**CPNRE 90°**



Courbe plate	B mm	RÉF. GS
CPNRE 100X60	100	224035
CPNRE 150X60	150	224036
CPNRE 200X60	200	224037
CPNRE 300X60	300	224038
CPNRE 400X60	400	224039
CPNRE 500X60	500	224040
CPNRE 600X60	600	224041

2 x JUNR2E + 4 x B1

**NE2E H60**



L = 3 m



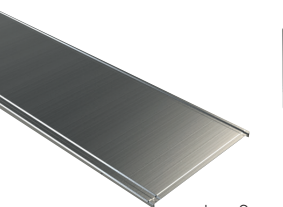
Chemin de câbles	B mm	RÉF. GS
NE2E 100X60	100	224333
NE2E 150X60	150	224334
NE2E 200X60	200	224335
NE2E 300X60	300	224336

**TCPNRE 90°**



Couvercle	B mm	RÉF. GS
TCPNRE 100	100	224063
TCPNRE 150	150	224064
TCPNRE 200	200	224065
TCPNRE 300	300	224066
TCPNRE 400	400	224067
TCPNRE 500	500	224068
TCPNRE 600	600	224069

**TERE**



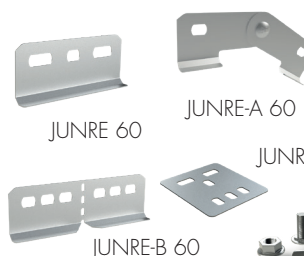
L = 3 m



PTNR2E

Couvercle	B mm	RÉF. GS
TNR2E 100	100	224841
TNR2E 150	150	224842
TNR2E 200	200	224843
TNR2E 300	300	224844
TNR2E 400	400	224845
TNR2E 500	500	224846
TNR2E 600	600	224847
PTNR2E H60	100	224848
PTNR2E H60	150-600	224849

**JUNRE**



JUNRE 60

JUNRE-A 60

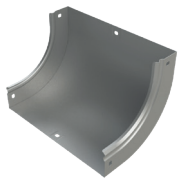
JUNRE-C

JUNRE-B 60

Ensemble	RÉF. GS
JUNRE 60	224217
JUNRE-A 60	224219
JUNRE-B 60	224220
B1-100	204356
JUNRE-C	224852

B1-100

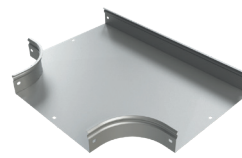
**CCNRE 90°**



Courbe concave	B	RÉF. GS
	mm	
CCNRE 100X60	100	224077
CCNRE 150X60	150	224078
CCNRE 200X60	200	224079
CCNRE 300X60	300	224080
CCNRE 400X60	400	224081
CCNRE 500X60	500	224082
CCNRE 600X60	600	224083

2 x JUNR2E + 4 x B1

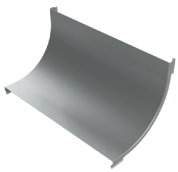
**TENRE**



Thé	B	RÉF. PG
	mm	
TENRE 100X60	100	224175
TENRE 150X60	150	224176
TENRE 200X60	200	224177
TENRE 300X60	300	224178
TENRE 400X60	400	224179
TENRE 500X60	500	224180
TENRE 600X60	600	224181

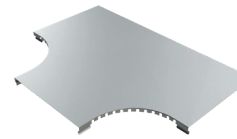
4 x JUNR2E + 8 x B1

**TCCNRE 90°**



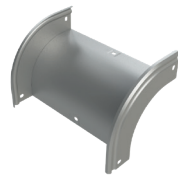
Couvercle	B	RÉF. GS
	mm	
TCCNRE 100	100	224105
TCCNRE 150	150	224106
TCCNRE 200	200	224107
TCCNRE 300	300	224108
TCCNRE 400	400	224109
TCCNRE 500	500	224110
TCCNRE 600	600	224111

**TTNRE**



Couvercle	B	RÉF. GS
	mm	
TTNRE 100	100	224189
TTNRE 150	150	224190
TTNRE 200	200	224191
TTNRE 300	300	224192
TTNRE 400	400	224193
TTNRE 500	500	224194
TTNRE 600	600	224195

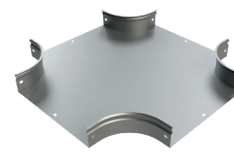
**CXNRE 90°**



Courbe convexe	B	RÉF. GS
	mm	
CXNRE 100X60	100	224119
CXNRE 150X60	150	224120
CXNRE 200X60	200	224121
CXNRE 300X60	300	224122
CXNRE 400X60	400	224123
CXNRE 500X60	500	224124
CXNRE 600X60	600	224125

2 x JUNR2E + 4 x B1

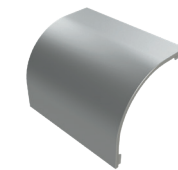
**CRNRE H60**



Croix	B	RÉF. GS
	mm	
CRNRE 100X60	100	224196
CRNRE 150X60	150	224197
CRNRE 200X60	200	224198
CRNRE 300X60	300	224199
CRNRE 400X60	400	224200
CRNRE 500X60	500	224201
CRNRE 600X60	600	224202

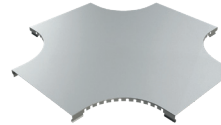
6 x JUNR2E + 12 x B1

**TCXNRE 90°**



Couvercle	B	RÉF. GS
	mm	
TCXNRE 100	100	224147
TCXNRE 150	150	224148
TCXNRE 200	200	224149
TCXNRE 300	300	224150
TCXNRE 400	400	224151
TCXNRE 500	500	224152
TCXNRE 600	600	224153

**TCRNRE**



Couvercle	B	RÉF. GS
	mm	
TCRNRE 100	100	224210
TCRNRE 150	150	224211
TCRNRE 200	200	224212
TCRNRE 300	300	224213
TCRNRE 400	400	224214
TCRNRE 500	500	224215
TCRNRE 600	600	224216

**ASNRE H60**



Dérivation	B	RÉF. GS
	mm	
ASNRE 100X60	100	224223
ASNRE 150X60	150	224224
ASNRE 200X60	200	224225
ASNRE 300X60	300	224226
ASNRE 400X60	400	224227
ASNRE 500X60	500	224228
ASNRE 600X60	600	224229

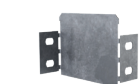
4 x B1

**TASNRE**



Couvercle	B	RÉF. GS
	mm	
TASNRE 100	100	224237
TASNRE 150	150	224238
TASNRE 200	200	224239
TASNRE 300	300	224240
TASNRE 400	400	224241
TASNRE 500	500	224242
TASNRE 600	600	224243

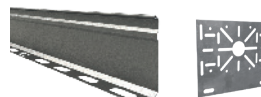
**RENRE**



Réduction	B	RÉF. GS
	mm	
RENRE-50X60	50	224797
RENRE-100X60	100	224798

4 x B1

**PS / SUCP**



Divers	B	RÉF. GS
	mm	
PSH60	3000	202066
SUCP	100	214255