



3EBasor
CABLE TRAY SPECIALIST

**TERTIARY
BUILDINGS**
Edificios terciarios

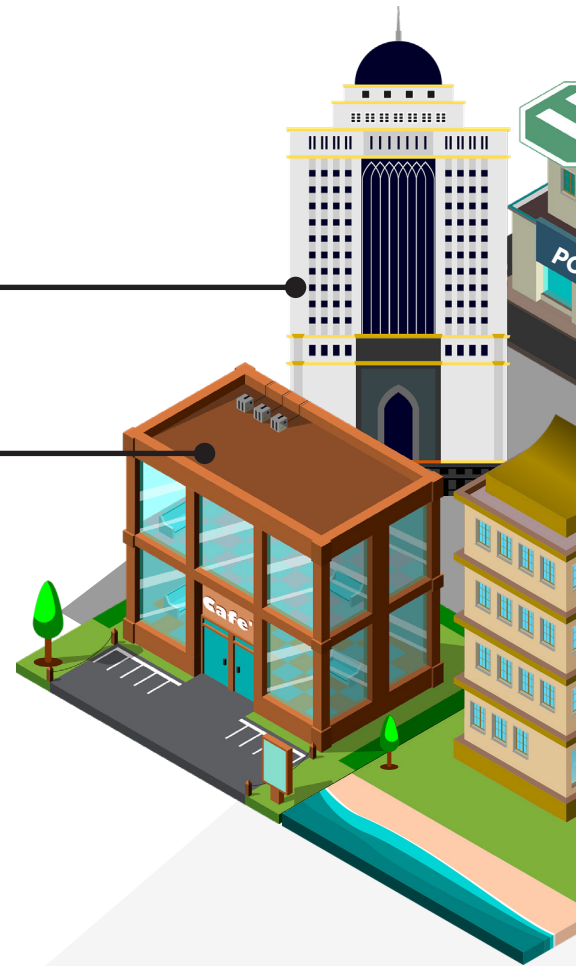
Different works, different solutions.

Basor Electric provides an innovative design, high durability and excellent quality to all products in the sector of the **tertiary buildings**. Our reputation for technical excellence is rooted in our long-established ability to solve many of the industry's technical challenges. We apply all our expertise working closely with our clients to offer them the best solution and the shortest delivery.

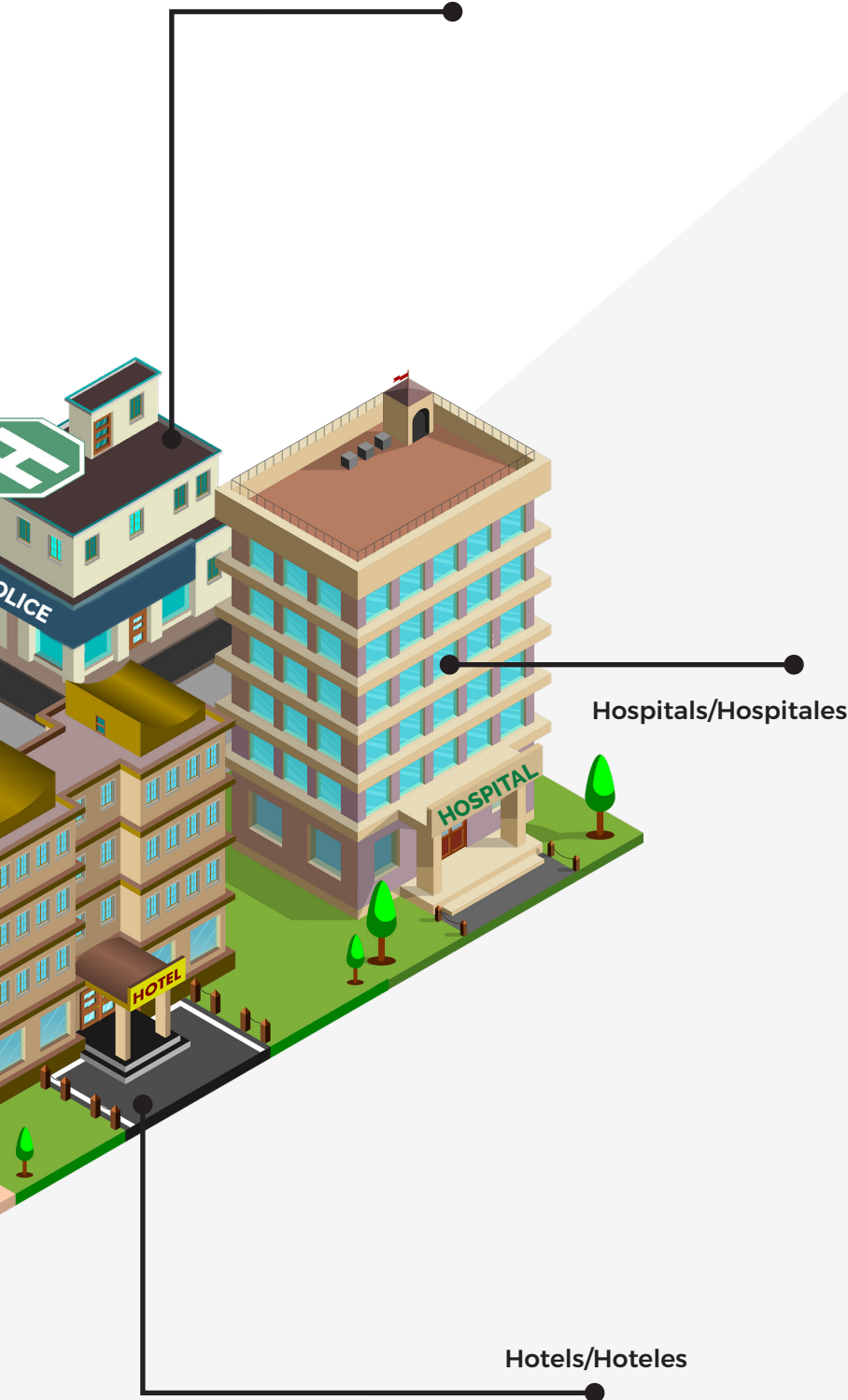
Basor Electric ofrece un diseño innovador, de alta durabilidad y excelente calidad para todos sus productos destinados al sector de la **edificación terciaria**. Nuestra reputación de excelencia técnica tiene sus raíces en nuestra gran capacidad para resolver los retos técnicos de la industria. Aplicamos toda nuestra experiencia trabajando en estrecha colaboración con nuestros clientes para ofrecerles la mejor solución y los plazos de entrega más cortos.

Offices/Oficinas

Shops/Comercios



Public Buildings/Edificios Públicos



Index / Índice

Technical addendum <i>Adenda técnica</i>	4
Hospitals <i>Hospitales</i>	6
Hotels <i>Hoteles</i>	8
Offices <i>Oficinas</i>	10
Shops <i>Comercios</i>	12
Public Buildings <i>Edificios Públicos</i>	14
Singular Buildings <i>Edificios singulares</i>	16
Our Experience <i>Nuestra experiencia</i>	18

Technical addendum

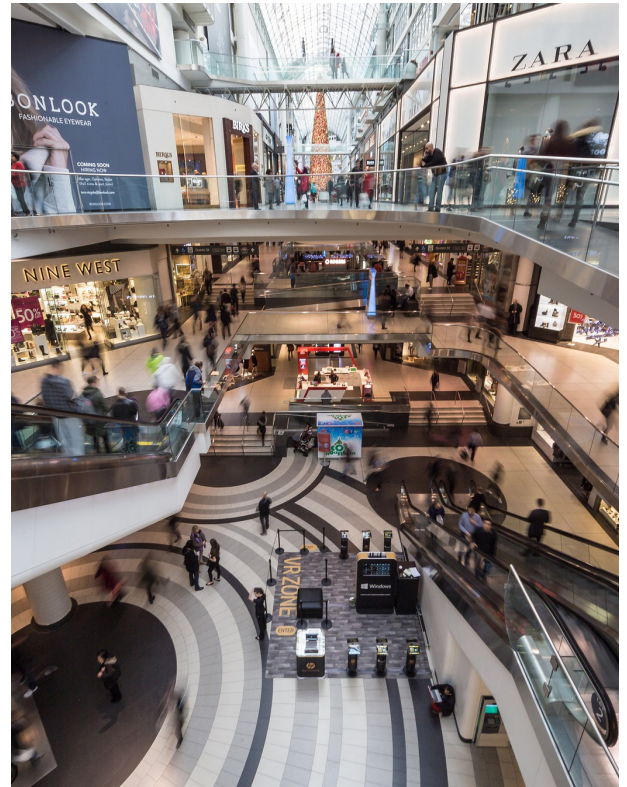
Adenda técnica

The **protection of people** in public buildings and workplaces is essential. The design of the Buildings and the Security Systems, together with the Electrical Installations, are the elements to **ensure evacuation** in case of fire, alarm, or lack of electricity supply.

The need to provide Security Services in buildings and special areas is regulated by **national regulations**, including Emergency Lighting, Elevators, Fire Fighting Equipment, Emergency Supplies, etc. together with the Electrical Installations, with their protections, wiring and conduits.

La **protección de las personas** en edificios públicos y centros de trabajo es fundamental. El diseño de los Edificios y los Sistemas de Seguridad, junto con las Instalaciones Eléctricas, son los elementos para **asegurar la evacuación** en caso de incendio, alarma, o falta de suministro eléctrico.

La necesidad de proporcionar Servicios de Seguridad en edificios y áreas especiales está regulada por **reglamentos nacionales**, incluyendo el Alumbrado de Emergencia, los Ascensores, los Equipos Contra Incendios, Suministros de Emergencia, etc. junto con las Instalaciones Eléctricas, con sus protecciones, cableados y canalizaciones.



Standards/Normativas

STANDARD IEC 60364-7-718

Low-voltage electrical installations - Part 7-718:
Requirements for special installations or locations -
Communal facilities and workplaces.

Typical examples of communal facilities and workplaces:

- assembly halls, assembly rooms;
- exhibition halls, theatres, cinemas;
- sales areas, restaurants;
- hotels, guest houses, residential care homes;
- meeting places, airports, railway stations;
- workshops, offices, factories, high-rise buildings...

Specific requirements are established for electrical installations in buildings, access routes and escape routes

- Installations for Security Services are described in the IEC 60364-5-56 Standard.
- More demanding requirements may be included in the National Regulations.

NORMA IEC 60364-7-718

Instalaciones eléctricas de baja tensión - Parte 7-718:
Requisitos para las instalaciones y emplazamientos especiales
Instalaciones comunitarias y lugares de trabajo.

Ejemplos de edificios públicos y lugares de trabajo:

- auditorios, salas de reuniones;
- salones de exhibiciones, teatros, cines;
- áreas comerciales; restaurantes;
- hoteles, hostales, residencias de ancianos;
- centros de reuniones, aeropuertos, estaciones;
- oficinas y plantas industriales, edificios elevados...

Se establecen requisitos específicos para las instalaciones eléctricas en edificios y las rutas de acceso y las rutas de evacuación:

- Las instalaciones para los Servicios de Seguridad se describen en la Norma IEC 60364-5-56.

- Requisitos más exigentes pueden estar recogidos en los Reglamentos Nacionales



International
Electrotechnical
Commission

STANDARD IEC 60364-5-56

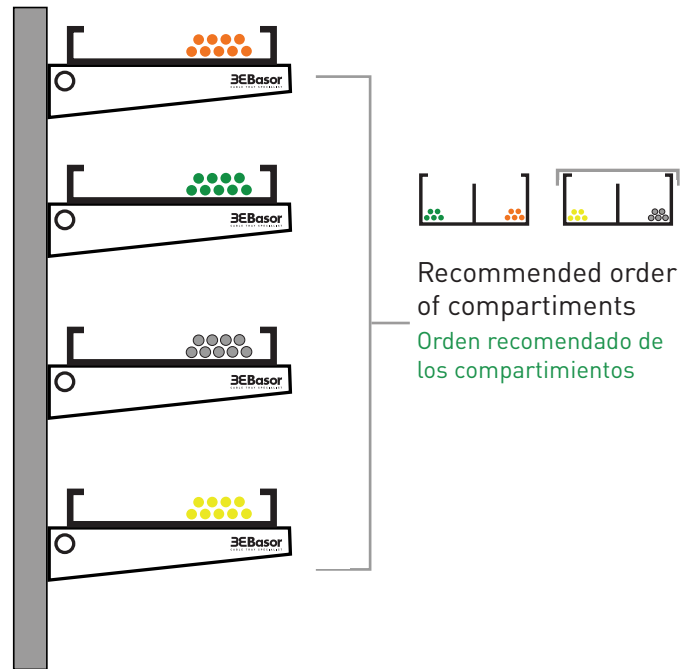
Low-voltage electrical installations - Part 5-56:
Selection and erection of electrical equipment - Safety services





Security services should be separated from other services and installed in such a way that security services are not affected by any breakdown that occurs in unsafe services and mitigate the effects of a fire. An example of cables installed for security services is shown in the figure:

NORMA IEC 60364-5-56

Instalaciones eléctricas de baja tensión. Parte 5-56:
Elección e instalación de los materiales eléctricos. Alimentación para los servicios de seguridad.

Los servicios de seguridad deberían estar separados de otros servicios e instalarse de tal forma que los servicios de seguridad no se vean afectados por cualquier avería que ocurra en los servicios no seguros y mitigar los efectos de un incendio. Se muestra un ejemplo de cables instalados para los servicios de seguridad en la figura:



-  **Safety services**
Servicios de seguridad
-  **Main power cabling**
Cableado de alimentación principal
-  **Measurement/Instrumentation**
Medición/Instrumentación
-  **Data**
Datos

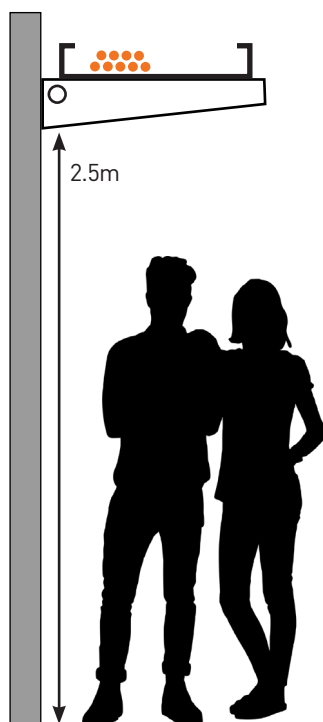


SPANISH NATIONAL REGULATIONS

Electrical facilities in Public Buildings;

Regulation is applied to public buildings for Spectacles, Sports, Hospitals, Meeting areas with more than 50 people:

- Facilities must ensure Emergency Lighting and the operation of the Security Services
- Cable management systems public areas must be, Tubes, Cable Trunking, or Cable Trays closed with cover
- Cable Trays or Cable Ladder on walls, in open areas, will be at a height of more than 2.5m from the ground
- Cable management systems will not reduce fire safety protection of the building structure.



REGLAMENTOS ESPAÑOLES

Instalaciones eléctricas en Locales de Pública Concurrencia;

Se aplica la norma a edificios de Espectáculos, Deportivos, Hospitales, de Reunión con más de 50 personas:

- Las instalaciones deben asegurar el Alumbrado de Emergencia y el funcionamiento de los Servicios de Seguridad
- Las Canalizaciones en zonas accesibles al público deben ser empotradas, Tubos, Canales, o Bandejas cerradas con tapa
- Las Bandejas o Bandejas de Escalera en pared, en zonas abiertas, estarán a una altura de más de 2,5m del suelo
- Las Canalizaciones no reducirá la seguridad contra incendios de la estructura del edificio.



Hospitals

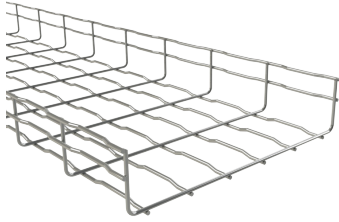
A hospital is an establishment destined to the care and assistance of patients by means of medical personnel, nursing staff, auxiliary personnel and technical services 24 hours a day, 365 days a year, having adequate technology, equipment, instruments and pharmacology. There are three kinds of hospitals: First, Second and Third level, their care being from less to greater complexity. Among them, patients with affectations ranging from simple to serious, critical, palliative or even terminal care are cared for.

Hospitales

Un hospital es un establecimiento destinado a la atención y asistencia de enfermos por medio de personal médico, enfermería, personal auxiliar y de servicios técnicos durante 24 horas, 365 días del año y disponiendo de tecnología, aparatología, instrumental y farmacología adecuadas. Existen tres clases de hospitales: de Primer, Segundo y Tercer nivel, siendo su asistencia de menor a mayor complejidad. Dentro de ellos se atiende a pacientes con afectaciones que irán de simples a graves, críticas, cuidados paliativos o incluso terminales.



Wire Mesh/ Hilo



model / BFR

↓↑ 100-600mm ↓↑ 35/65/105/150

↔ 3000 mm 📦 SWL LOW

📄 Stainless Steel 304L

CMS with Electrical continuity



model / BF2R

↓↑ 100-600mm ↓↑ 65/105

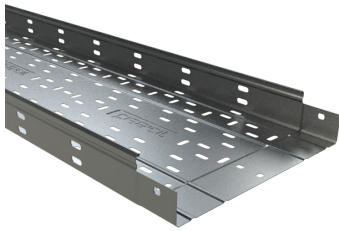
↔ 3000 mm 📦 SWL LOW

📄 Stainless Steel 304L / EZ1000

CMS with Electrical continuity



Cable trays/ Bandejas Portacable



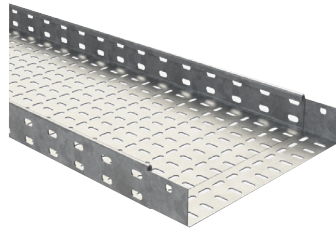
model / ERE

↓↑ 100-600mm ↓↑ 35/65/105/150

↔ 3000 mm 📦 SWL LOW

📄 Stainless Steel 304L

CMS with Electrical continuity



model / BS

↓↑ 50-900mm ↓↑ 12/25/50/75/100

↔ 3000 mm 📦 SWL MEDIUM

📄 Stainless Steel 316L

CMS with Electrical continuity

Cable trays/ Bandejas Portacable



model / BPE

↓↑ 100-600mm ↓↑ 60/100

↔ 3000 mm 📦 SWL MEDIUM

📄 PVC M1 UV

CMS Insulating



Trunking/ Canales



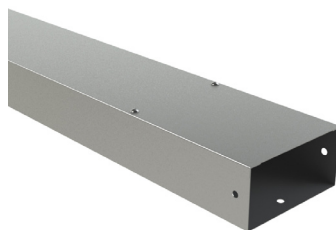
model / BPE+COVER

↓↑ 100-600mm ↓↑ 60/100

↔ 3000 mm 📦 SWL MEDIUM

📄 PVC M1 UV

CMS Insulating



model / CTI

↓↑ 80-140mm ↓↑ 40/60/80

↔ 3000 mm 📦 SWL MEDIUM

📄 Stainless Steel 304L

CMS with Electrical continuity

Cable ladder/ Escalera



model / F

↓↑ 100-600mm ↓↑ 100

↔ 3000 mm 📦 SWL MEDIUM

📄 Aluminum

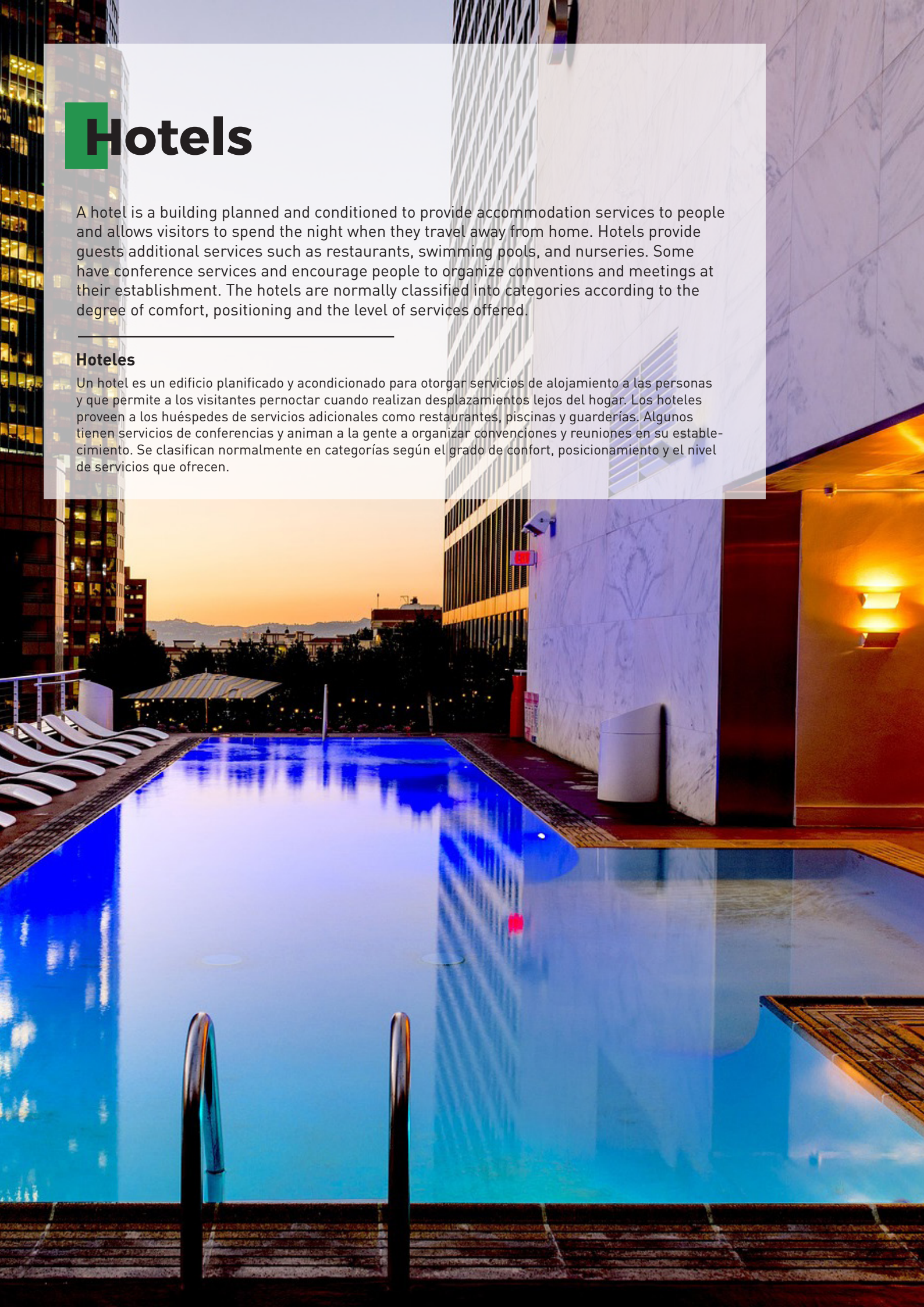
CMS with Electrical continuity

Hotels

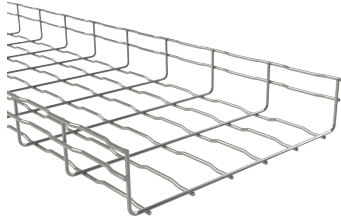
A hotel is a building planned and conditioned to provide accommodation services to people and allows visitors to spend the night when they travel away from home. Hotels provide guests additional services such as restaurants, swimming pools, and nurseries. Some have conference services and encourage people to organize conventions and meetings at their establishment. The hotels are normally classified into categories according to the degree of comfort, positioning and the level of services offered.

Hoteles

Un hotel es un edificio planificado y acondicionado para otorgar servicios de alojamiento a las personas y que permite a los visitantes pernoctar cuando realizan desplazamientos lejos del hogar. Los hoteles proveen a los huéspedes de servicios adicionales como restaurantes, piscinas y guarderías. Algunos tienen servicios de conferencias y animan a la gente a organizar convenciones y reuniones en su establecimiento. Se clasifican normalmente en categorías según el grado de confort, posicionamiento y el nivel de servicios que ofrecen.



Wire Mesh/ Hilo



model / BFR

100-600mm 35/65/105/150

3000 mm SWL LOW

Electrozincated EZ

CMS with Electrical continuity



model / BF2R

100-600mm 65/105

3000 mm SWL LOW

Electrozincated EZ1000

CMS with Electrical continuity



model / BF2R

100-600mm 65/105

3000 mm SWL LOW

Electrozincated EZ + Paint

CMS with Electrical continuity

Cable trays/ Bandejas Portacable



model / ERE

100-600mm 35/65/105/150

3000 mm SWL LOW

Pre-Galvanized

CMS with Electrical continuity



model / MRE

50-900mm 12/25/50/75/100

3000 mm SWL MEDIUM

Pre-Galvanized

CMS with Electrical continuity



model / BPE

100-600mm 60/100

3000 mm SWL MEDIUM

PVCm1 UV

CMS Insulating



Cable ladder/ Escalera



model / FE

100-600mm 60/75/100/120/150

3000/6000 mm SWL MEDIUM

Hot dip galvanized

CMS with Electrical continuity



model / BSL

100-600mm 100

3000 mm SWL HIGH

Hot dip galvanized

CMS with Electrical continuity

Trunking/ Canales



model / BPE+COVER

100-600mm 60/100

3000 mm SWL MEDIUM

PVCm1 UV

CMS Insulating



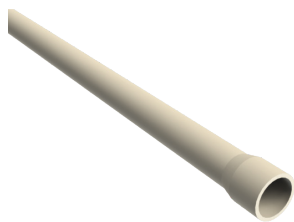
Offices

An office is a place for work. There are many ways to distribute the space in an office depending on the function and how many people will work within the same premises. There are situations in which each worker can have their own site and other examples of a large open office that can be composed of a main site with many people working in the same space.

Oficinas

Una oficina es un lugar destinado al trabajo. Existen muchas formas de distribuir el espacio en una oficina según la función y cuántas personas trabajarán dentro del mismo local. Se dan situaciones en las que cada trabajador puede tener su propio sitio y otros ejemplos de oficina grande abierta que se puede componer de un sitio principal con muchas personas que trabajan en el mismo espacio.

Tube/ Tubo plástico



model / RE1250 RLH

∅ 16/20/25/32/40/50/63

↔ 3000 mm IP54

📄 Halogen Free

CMS Insulating



model / R1250 CLH

∅ 16/20/25/32/40/50/63

↔ 3000 mm IP40

📄 Halogen Free

CMS Insulating



model / R1250 PVC

∅ 16/20/25/32/40/50/63

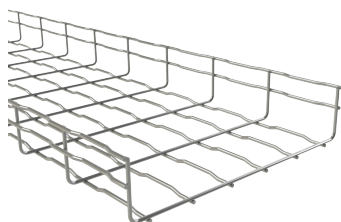
↔ 3000 mm IP40

📄 PVC

CMS Insulating



Wire Mesh/ Hilo



model / BFR

↕ 100-600mm ↕ 35/65/105/150

↔ 3000 mm 📄 SWL LOW

📄 Electrozincated EZ

CMS with Electrical continuity



model / BF2R

↕ 100-600mm ↕ 65/105

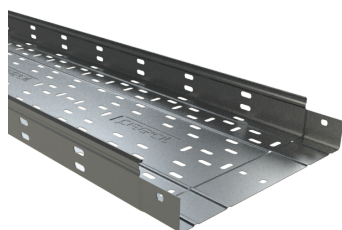
↔ 3000 mm 📄 SWL LOW

📄 Electrozincated EZ/EZ1000

CMS with Electrical continuity



Cable trays/ Bandejas Portacable



model / ERE

↕ 100-600mm ↕ 35/65/105/150

↔ 3000 mm 📄 SWL LOW

📄 Pre-Galvanized

CMS with Electrical continuity



model / MRE

↕ 50-900mm ↕ 12/25/50/75/100

↔ 3000 mm 📄 SWL MEDIUM

📄 Pre-Galvanized

CMS with Electrical continuity

Cable trays/ Bandejas Portacable



model / BPE

↕ 100-600mm ↕ 60/100

↔ 3000 mm 📄 SWL MEDIUM

📄 PVC M1 UV

CMS Insulating



Shops

A shop or store business is a type of commercial establishment, where the buyer can acquire both goods and services through a monetary exchange.

Stores can focus on selling specific products such as clothing, food, or electronics, or expand their assortment to various types of items. In addition to the independent stores that operate by themselves, there are the commercial galleries and shopping centers where several stores (commercial premises) share an enclosed area.

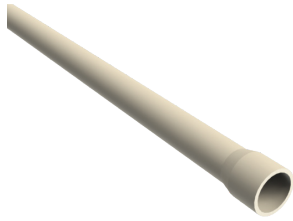
Tiendas

Una tienda o negocio es un tipo de establecimiento comercial, donde el comprador puede adquirir tanto bienes como servicios a mediante un intercambio monetario.

Las tiendas pueden dedicarse a vender productos determinados tales como ropa, comida o electrónica, o ampliar su surtido a diversos tipos de artículos. Además de las tiendas independientes que funcionan por sí mismas, existen las galerías comerciales y centros comerciales donde varias tiendas (locales comerciales) comparten un recinto cerrado.



Tube/ Tubo plástico



model / RE1250 RLH

Ø 16/20/25/32/40/50/63

3000 mm IP54

Halogen Free

CMS Insulating



model / R1250 CLH

Ø 16/20/25/32/40/50/63

3000 mm IP40

Halogen Free

CMS Insulating



model / FLEXL 7031

Ø 10/13/16/18/21/28/34/42/54

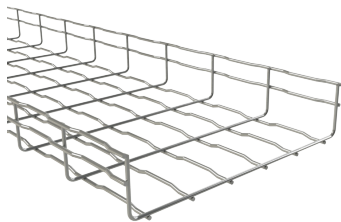
6J / IK08 IP66/68

PA Halogen Free

CMS Insulating



Wire Mesh/ Hilo



model / BFR

100-600mm 35/65/105/150

3000 mm SWL LOW

Electrozincated EZ

CMS with Electrical continuity



model / BF2R

100-600mm 65/105

3000 mm SWL LOW

Electrozincated EZ1000

CMS with Electrical continuity



model / BF2R

100-600mm 65/105

3000 mm SWL LOW

Electrozincated EZ + Paint

CMS with Electrical continuity

Cable trays/ Bandejas Portacable



model / ERE

100-600mm 35/65/105/150

3000 mm SWL LOW

Pre-Galvanized

CMS with Electrical continuity



Cable trays/ Bandejas Portacable



model / BPE

100-600mm 60/100

3000 mm SWL MEDIUM

PVCM1 UV

CMS Insulating



Trunking/ Canales



model / BPE+COVER

100-600mm 60/100

3000 mm SWL MEDIUM

PVCM1 UV

CMS Insulating



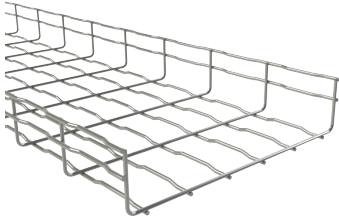
Public Buildings

A public building is a place which activities of some national or international, provincial or municipal administration take place, whether of a civil, military or religious nature are developed. Palaces, ministries, councils, town halls, captaincies and temples are considered public buildings. Those buildings with historical or cultural reasons such as museums or official university or secondary education buildings are also considered.

Edificios públicos

Un edificio público es aquel en el que se desenvuelven actividades de alguna rama de la administración nacional o internacional, provincial o municipal, ya sea de índole civil, militar o religiosa. Se consideran edificios públicos los palacios, ministerios, diputaciones, ayuntamientos, capitanías y templos entre otros. Son considerados también aquellos edificios con razones históricas o culturales tales como museos o edificios de enseñanza universitaria o secundaria oficial.

Wire Mesh/ Hilo



model / BFR

100-600mm 35/65/105/150

3000 mm SWL LOW

Electrozincated EZ



model / BF2R

100-600mm 65/105

3000 mm SWL LOW

Electrozincated EZ1000



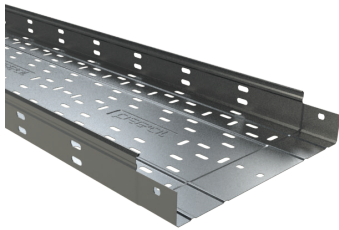
model / BF2R

100-600mm 65/105

3000 mm SWL LOW

Electrozincated EZ + Paint

Cable trays/ Bandejas Portacable



model / ERE

100-600mm 35/65/105/150

3000 mm SWL LOW

Pre-Galvanized

CMS with Electrical continuity



model / MRE

50-900mm 12/25/50/75/100

3000 mm SWL MEDIUM

Pre-Galvanized

CMS with Electrical continuity



model / BPE

100-600mm 60/100

3000 mm SWL MEDIUM

PVCm1 UV

CMS Insulating



Cable ladder/ Escalera



model / FE

100-600mm 60/75/100/120/150

3000/6000 mm SWL MEDIUM

Hot dip galvanized

CMS with Electrical continuity



model / BSL

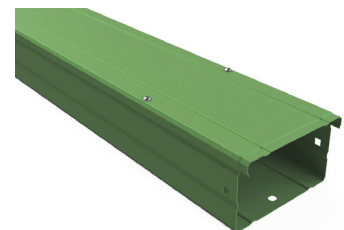
100-600mm 100

3000 mm SWL HIGH

Hot dip galvanized

CMS with Electrical continuity

Trunking/ Canales



model / CT GSP

400-600mm 40/60/80/100

3000 mm SWL MEDIUM

PG + Painting

CMS with Electrical continuity

Singular Buildings

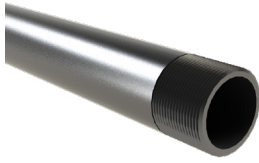
These are all those emblematic constructions that characterize a place and that are “unique” due to their dimensions, their use, the methodology or form of construction or projection, the motivation behind their elaboration, etc. They tend to be buildings “special”, often emblematic and often oriented to services, leisure or conservation of the city’s historical heritage.

Edificios singulares

Se trata de todas aquellas construcciones emblemáticas que caracterizan un lugar y que resultan “singulares” por sus dimensiones, por su uso, por la metodología o forma de construcción o proyección, por la motivación que está detrás de su elaboración, etc. Suelen ser edificaciones “especiales”, con frecuencia emblemáticas y a menudo, orientadas a servicios, ocio o conservación del patrimonio histórico de la ciudad.



Conduit/ Tubo metálico



model / SSM-SSS

Ø 1/2"-4" NPT Threaded
 6000 mm 20J/IK 10
 Hot dip galvanized
 CMS with Electrical continuity

Trunking/ Canales



model / CTI

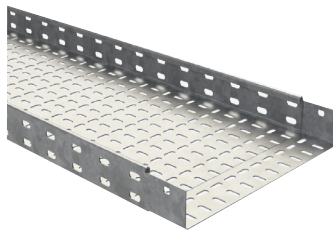
80-140mm 40/60/80
 3000 mm SWL MEDIUM
 Stainless Steel 304L
 CMS with Electrical continuity

Cable trays/ Bandejas Portacable



model / ERE

100-600mm 35/65/105/150
 3000 mm SWL LOW
 Stainless Steel 304L
 CMS with Electrical continuity



model / BS

50-900mm 12/25/50/75/100
 3000 mm SWL MEDIUM
 Stainless Steel 316L
 CMS with Electrical continuity



model / U

50-600mm 15/30/60
 3000 mm SWL MEDIUM
 Aluminum
 CMS with Electrical continuity

Cable ladder/ Escalera



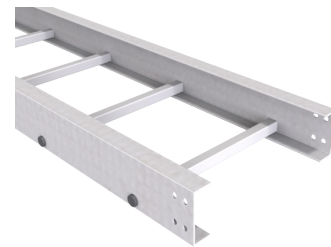
model / F

100-600mm 100
 3000 mm SWL MEDIUM
 Aluminum
 CMS with Electrical continuity



model / IL-IS-IR

200-900mm 100/120/150
 6000 mm SWL HIGH
 Aluminum
 CMS with Electrical continuity



model / EFV

150-900mm 70/100/150/200
 6000 mm SWL HIGH
 Glass fiber reinforced polyester
 Insulating

Our experience: Hospitals / Nuestra experiencia: Hospitales

SPANISH LIST OF HOSPITALS

Name	Place
CATALONIA GENERAL HOSPITAL	Barcelona
HOSPITAL OF ALZIRA	Alzira, Valencia
HOSPITAL OF LEÓN	León
NEW O'DONELL MATERNITY	Madrid
HOSPITAL OF CIUDAD REAL	Ciudad Real
BAIX LLOBREGAT HOSPITAL	Sant Joan Despí, Barcelona
HOSPITAL OF CEUTA	Ceuta
HOSPITAL OF DENIA	Denia, Alicante
ARNAU DE VILANOVA HOSPITAL	Lleida
HOSPITAL OF VILLAJYOSA	Villajoyosa, Alicante
SAN JOAN DE DEU HOSPITAL	Manresa, Barcelona
SAN PAU HOSPITAL	Barcelona
HOSPITAL OF OLOT	Olot, Girona
HOSPITAL OF BURGOS	Burgos
HOSPITAL OF ALCALÁ DE HENARES	Alcalá de Henares, Madrid
HOSPITAL OF ALCALÁ DEL REAL	Alcalá del Real, Granada
HOSPITAL OF LLIRIA	Lliria, Valencia
12TH OF OCTOBER HOSPITAL	Madrid
DEL TAJO HOSPITAL	Aranjuez, Madrid
HOSPITAL OF TORREJÓN	Torrejón, Madrid
VALLECAS HOSPITAL	Vallecas, Madrid
HOSPITAL OF SALAMANCA	Salamanca
HOSPITAL OF TOLEDO	Toledo
PALMA DEL RIO HOSPITAL	Granada
QUIRON MADRID HOSPITAL	Madrid
HUCA HOSPITAL	Oviedo, Asturias
HOSPITAL OF GANDIA	Gandia, Valencia
CRUCES HOSPITAL	Barakaldo, Vizcaya
HOSPITAL OF LORCA	Lorca, Murcia
DR. NEGRIN HOSPITAL	Las Palmas of Gran Canaria
DEL MAR HOSPITAL	Barcelona
LIRIA HOSPITAL	Liria, Valencia



INTERNATIONAL LIST OF HOSPITALS

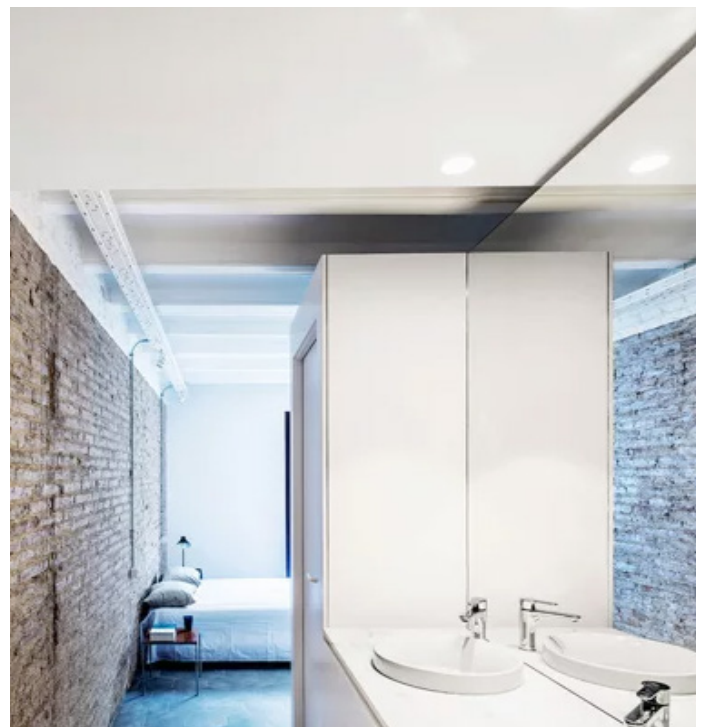
Name	Place
HOSPITAL OF PUERTO PRINCIPE	Puerto Príncipe, Haiti
HOSPITAL OF CARCASSONE	Carcassone, France
EXTENSION PUERTO PRINCIPE	Puerto Principe, Haiti
HOSPITAL CENTER EMILE ROUX	Le-Puy-en-Velay, France
HOSPITAL OF SUCRE	Sucre, Bolivia
FERNANDO PESSOA HOSPITAL	Gondomar, Portugal
ST. MICHAEL DE JACMEL HOSPITAL	Jacmel, Haiti
MONTERO GENERAL HOSPITAL	Montero, Bolivia
HOSPITAL DR. R.HERNÁNDEZ	Panama



Our experience: Hotels/ Nuestra experiencia: Hoteles

SPANISH LIST OF HOTELS

Name	Place
HOTEL AYALA	Segovia
HOTEL PLAYA PARAISO	Tenerife
DEISA-HOTEL SANTA CATALINA	Las Palmas de Gran Canaria
HOTEL DYNASTIC BENIDORM	Benidorm, Alicante
SICYME-HOTEL TRH	Palma de Mallorca, Mallorca
MONELEG-HOTEL TARIFA	Tarifa, Málaga
HOTEL SAMPOL	Tenerife
HOTEL TRH TORRENOVA	Palma de Mallorca, Mallorca
HOTEL OLIMPUS - DELUX	Benidorm, Alicante
GRAN HOTEL MIRAMAR	Málaga
HOTEL ZAFIRO 5*	Palma de Mallorca, Mallorca
HOTEL DON PABLO	Playa de Gandia, Valencia
HOTEL LAKUA	Álava, País Vasco
HOTEL ZAFIRO PALMANOVA	Palmanova, Islas Baleares
HOTEL RIU COSTA DEL SOL	Torremolinos, Málaga
HOTEL MAJESTIC	Barcelona
HOTEL CORALES SUITE BARCELO	Tenerife
HOTEL SOL MOGÁN	Las Palmas de Gran Canaria
HOTEL BALNEARIO FRAILES	Jaen
HOTEL WASHTINGTON IRVING	Granada
HOTEL BARROSA	Soria
HOTEL HYATT - MALLORCA	Palma de Mallorca, Mallorca
HOTEL GRANADA CENTER	Granada
HOTEL LAS PALMAS-PIZARRO	Las Palmas de Gran Canaria
HOTEL PALMA	Palma de Mallorca, Mallorca
HOTEL IBIS M-30	Madrid
HOTEL PALACE	Madrid
HOTEL SON MOLL	Cala Ratjada, Mallorca
HOTEL HELIO	Benidorm, Alicante
HOTEL CATALONIA	Barcelona
HOTEL PARADOR CADIZ	Cadiz
HOTEL ALFONSO XIII	Seville



INTERNATIONAL LIST OF HOTELS

Name	Place
HOTEL OCHO RIOS	Ocho Rios, Jamaica
HOTEL LOPESAN BÁVARO	Punta Cana, Rep. Dominicana
HOTEL SAINT RAFAEL	Saint Rafael, France
AZ HOTEL MOSTAGANEM	Mostaganem, Argelia
HOTEL RIU PUNTA CANA	Punta Cana, Dominican Rep.
HOTEL VICTORIA SUITS DOMINGO	Quito, Perú
HILTON AL HOUARA	Tanger, Morocco
HOTEL SANCTUARY CAP CANA	Cap Cana, Dominican Rep.
HOTEL OCEAN SPA	Gibraltar, United Kingdom
HILTON ALGER	Alger, Argelia
HOTEL RIU NEGRIL	Negril, Jamaica
HILTON AL HOUARA HOTEL	Tangier, Morocco
HOTEL IBEROSTAR DOMINICANA	Punta Cana, Dominican Rep.
HILTON ALGER	Alger, Argelia
HOTEL BARCELÓ MÉXICO	Mexico DF, Mexico
HOTEL RIU GUANACASTE	Matapalo, Costa Rica
HOTEL EXCELLENCE PUNTA CANA	Punta Cana, Dominican Rep.
HOTEL HYATT PUNTA CANA	Punta Cana, Dominican Rep.
HOTEL CLUB MEDITERRANEO	Punta Cana, Dominican Rep.



Our experience: Offices / Nuestra experiencia: Oficinas

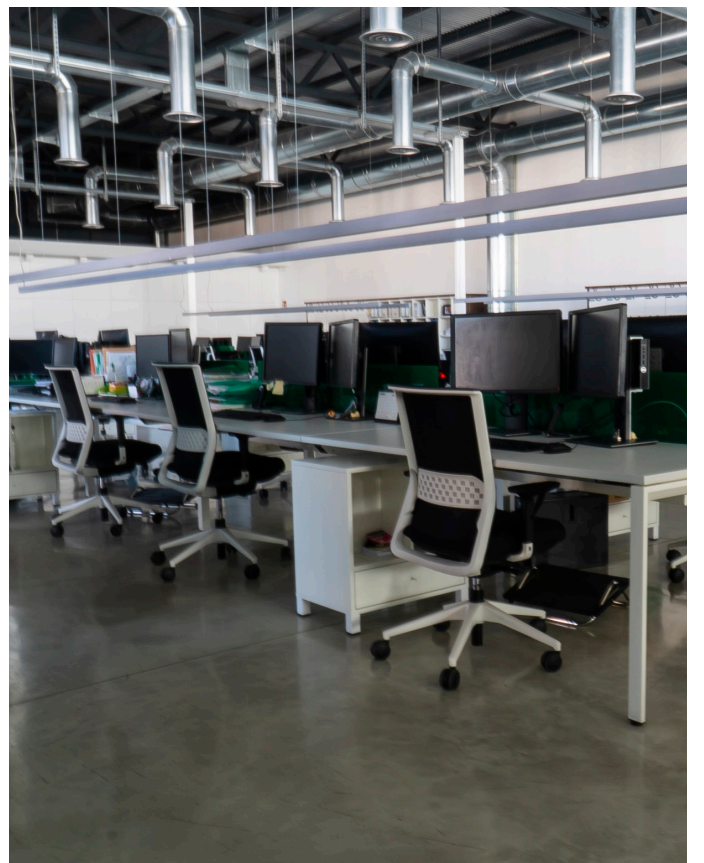
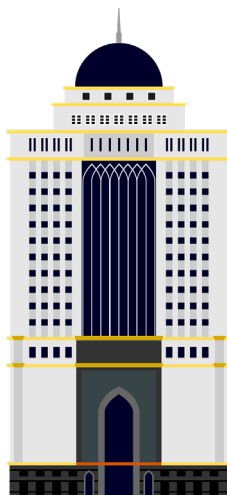
SPANISH LIST OF OFFICES

Name	Place
CUZCO BUILDING	Madrid
BINTER HQ'S	Tenerife
ZURICH DIAGONAL BUILDING	Barcelona
IDOM ENGINEERING HQ'S	Bilbao
TELEFONICA BUILDING	Madrid
CRISTALIA PLAY BUILDING	Madrid
METROVACESA HQ'S	Madrid
BBVA BANK HQ'S	Madrid
VODAFONE HQ'S	Getafe, Madrid
TECNATOM HQ'S	Madrid
BANCO POPULAR	Madrid
REAL MADRID OFFICE BUILDING	Madrid
SANTANDER BANK HQ'S	Madrid
MUTUA MADRILEÑA HQ'S	Madrid
SABADELL BANK	Sabadell
CAJAMAR HQ'S	Almería
BANKIA BANK VLC HQ'S	Valencia
AXA HQ'S	Madrid
ALDI OFFICE BUILDING	Seville
MAPFRE BUILDING	Murcia
METROCENTRO HQ'S	Seville
JOSEP CARRERAS FOUNDATION	Barcelona
MAYORAL LOGISTIC HQ'S	Málaga
PALAU SIBARIS BUILDING	Barcelona
CESNA BUILDING	Valencia
BANCO POPULAR HQ'S	Madrid
BBVA FOUNDATION	Madrid
CAJA MURCIA HQ'S	Murcia
CPD UNICAJA BUILDING	Ronda, Málaga
EUROPE BUILDING	Alcobendas, Madrid
INDITEX FOUNDATION	La Coruña



INTERNATIONAL LIST OF OFFICES

Name	Place
BANK OF AMERICA	Hong Kong
SICOTEL BUILDING	Casablanca, Morocco
AGB BANK	Argel, Algeria
HISTORIAN'S OFFICE LA HABANA	La Habana, Cuba
TOUTGAZ HQ'S	Alger, Algeria
ITER OFFICE BUILDING	Cadarache, France
SEDENA CORPORATE BUILDING	Mexico DF, Mexico
L. CARDENAS CONTAINER TERMINAL	Michoacan, Mexico



Our experience: Shops / Nuestra experiencia: Tiendas

SPANISH LIST OF SHOPS

Name	Place
NIKE STORE	Barcelona
STRADIVARIUS STORES	Barcelona-Madrid-Valencia
DESIGUAL STORE	Madrid
H&M STORE	Murcia
MANGO STORE	Valencia
OYSHO STORES	Barcelona-Madrid-Valencia
CORTEFIEL STORE	Valencia
SPRINTER STORE	Seville
ZARA STORES	Barcelona-Madrid-Valencia
UTERQÜE STORES	Barcelona-Madrid-Valencia
DECATHLON MEGASTORE	Barcelona-Madrid-Valencia
EL CORTE INGLÉS MALLS	Barcelona-Madrid-Valencia
INSIDE STORE	Ciudad Real
MASSIMO DUTTI STORES	Barcelona-Madrid-Valencia
PULL & BEAR STORES	Barcelona-Madrid-Valencia
DESCHAMPS STORE	Madrid
ZARA HOME STORES	Barcelona-Madrid-Valencia
BERSHKA STORES	Barcelona-Madrid-Valencia
CALZEDONIA STORE	Valencia
LEVI'S STORE	Valencia
DESKARO STORE	Valencia
ADOLFO DOMINGUEZ STORE	Albacete
PRIMARK	Valencia
BRICOMART STORE	Madrid
CONFORAMA STORE	Madrid
IKEA STORES	Barcelona-Madrid-Valencia
KIAMI STORE	Barcelona
LEFTIES STORES	Barcelona-Madrid-Valencia
MEDIA MARKET STORE	Barcelona

INTERNATIONAL LIST OF SHOPS

Name	Place
LEVI'S STORE	Andorra
OPTIONS+	Andorra
OVS KIDS	Andorra
PLAZA POLANCO SHOPPING MALL	Mexico DF, Mexico



Our experience: Public buildings/ **Nuestra experiencia: Edificios públicos**

SPANISH LIST OF PUBLIC BUILDINGS

Name	Place
COURT OF LAS PALMAS	Las Palmas of Gran Canaria
UNIVERSITY OF CADIZ	Cadiz
ADMINISTRATIVE BUILDING JDA	Seville
UNIR UNIVERSITY	La Rioja
NEW JUDICIAL HEADQUARTERS	Las Palmas of Gran Canaria
COURT OF ORENSE	Orense
VALENCIA PRISON	Valencia
UNIVERSITY OF ZARAGOZA I+D	Zaragoza
LAS ROZAS TOWN HALL	Las Rozas, Madrid
AGORA BUILDING	Valencia
COURT OF ALMENDRALEJO	Almendralejo, Badajoz
INSS BUILDING	Seville
TRIBUNAL OF VIA LAYETANA	Barcelona
BANK OF SPAIN	Madrid
UNIVERSITY OF MURCIA	Espinardo, Murcia
TORREJON MILITAR AIR BASE	Torrejón, Madrid
TRIBUNAL OF PONFERRADA	Ponferrada
ICEX HQ'S CASTELLANA	Madrid
COURT OF MERIDA	Merida, Badajoz
CASTELLON TREASURY HQ'S	Castellón
IT AREA UNIVERSITY OF GRANADA	Granada
ALICANTE UNIVERSITY	Alicante
POLITECHNICAL UNIVERSITY VLC	Valencia
VALENCIA TOWN HALL	Valencia
GERONA TREASURY HQ'S	Gerona
UNIVERSITY OF LLEIDA	Lérida
MUNICIPAL MARKET	Barcelona
INSS BUILDING	Lugo
UNIVERSITY OF CEUTA	Ceuta
PABLO OLAVIDE UNIVERSITY	Seville
SEVILLE TREASURY HQ'S	Seville



INTERNATIONAL LIST OF PUBLIC BUILDINGS

Name	Place
MINISTRY OF NATIONAL DEFENSE	Taiwan ROC
TAIPEI MUNICIPAL NIGHT MARKET	Taiwan ROC
PARLIAMENT OF ANDORRA	Andorra
NATIONAL TAX ADMINISTRATION	Taiwan ROC
GOVERNMENTAL CIVIC CENTER	Tegucigalpa, Honduras



Our experience: Sigular buildings/ Nuestra experiencia: Edificios singulares

SPANISH OTHER BUILDINGS

Name	Place
P. PICASSO MUSEUM BUILDING	Seville
AENA BUILDING	Madrid
MALAGA PORT AUTHORITY	Malaga
ARTS MUSEUM	Valencia
WANDA METROPOLITANO STADIUM	Madrid
LA ALCAIDESA RESIDENTIAL AREA	Cádiz
NASSICA SHOPPING MALL	Getafe
PORT BORDER INSPECTION CENTER	Barcelona
BARBERÁ SHOPPING MALL	Barberá
WARNER BROS PARK	Madrid
AGBAR TOWER	Barcelona
MAS XINGU INDUSTRIAL BUILDINGS	San Cugat del Vallés
ICL PORT TERMINAL	Barcelona
CABO ROYAL RESIDENTIAL AREA	Málaga
SAN JUAN FLAT TOWER	Alicante
NORTE ARANDA BUILDING	Málaga
CITY ARTS AND CIENCIAS	Valencia
LOS ARCOS SHOPPING MALL	Sevilla
CALEIDO TOWER	Madrid
NEVADA SHOPPING MALL	Granada
MISERICORDIA RESIDENTIAL AREA	Pamplona
ALISIOS SHOPPING MALL	Las Palmas
BULLI FOUNDATION	Barcelona
CALEIDO SKYSCRAPER TOWER	Madrid
PLAYA PARAISO SHOPPING MALL	Tenerife
LOGISTIC MERLIN PROPERTIES	Guadalajara
PORT AVENTURA PARK	Tarragona
MADRID RÍO INFRASTRUCTURE	Madrid
TERRA MITICA PARK	Benidorm
INDITEX FOUNDATION	Coruña
UNIVERSAL EXPO 1992 / 2008	Barcelona / Zaragoza
JOSEP CARRERAS FOUNDATION	Barcelona



INTERNATIONAL OTHER BUILDINGS

Name	Place
AMADOR CONVENTION CENTER	City of Panama, Panama
AUDI PRODUCTION PLANT	Puebla, Mexico
PEDRO B. STADIUM	Buenos Aires, Argentina
BOCA JUNIORS STADIUM	Buenos Aires, Argentina
WAITING AREA INTERJET AIR	Mexico DF, Mexico
MAZDA PRODUCTION PLANT	Guanajuato, Mexico
POMPIDOU MUSEUM	Paris, France
BUDDHIST TEMPLE	Bangkok, Thailand



BEGREEN
CableManagementSystems

BE Basor
CABLE TRAY SPECIALIST

BASOR ELECTRIC S.A Headquarters

Avenida Alcodar 45-47
46701 Gandia SPAIN

+34 962876695
basor@basor.com
www.basor.com


@basorelectric


[www.linkedin.com/
company/basor-electric-sa](https://www.linkedin.com/company/basor-electric-sa)


[www.youtube.com/user/
basorelectric](https://www.youtube.com/user/basorelectric)