

Case of success: *Somport tunnel* Spain-France

Metal cable trays in HDG





21.522 meters of cable tray
14.348 supports
5.985 meters of strut

The Somport tunnel

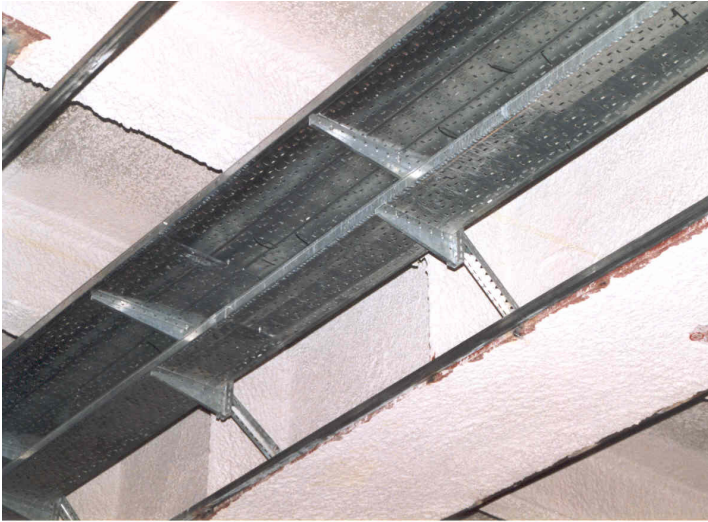
European Route E-07 (Pyrenees), connection
Spanish-French cross-border roads

The Somport tunnel is an international road tunnel located in the central Pyrenees. It joins the valleys of Aragon (Spain) and Aspe (France). It was built thanks to an international agreement signed by Spain and France between 1994 and 2002. It was inaugurated on 17th of January, 2003. It has a length of 8,608 meters, of which 5,759 meters are on the Spanish side and 2,849 meters on the French side. It is the longest road tunnel in Spain.

Characteristics:

- Length 8,608 meters
- Cross section of 10.5 meters
- Crossing of two vehicles simultaneously
- 1 meter wide central band
- 19 evacuation galleries
 - 13 on the Spanish side
 - 6 on the French side
- 86 fire niches
- 11 shelters
- 9 return galleries
- 5 sidings
- 200 security cameras





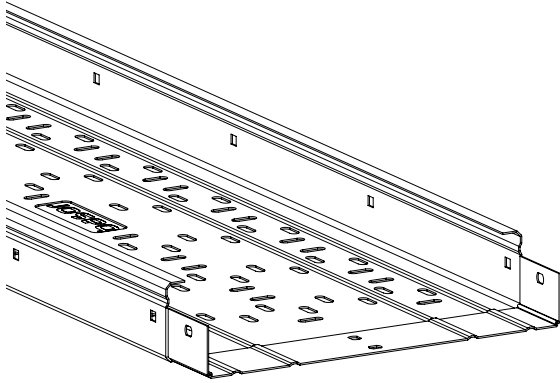
After eight years of works, the Somport tunnel was inaugurated in January 2003 by Francisco Álvarez Cascos and Gilles de Robien, Ministers of Development of Spain and France and became (and still is) the longest tunnel in Spain and the in the second longest in Europe.

BASORTRAY FRE

UNE-EN 61537
REV.20/04/2016

DATA SHEET INSTALLED PRODUCT

FRE



Models (BxH):

100x35; 150x35; 200x35; 300x35; 100x60; 150x60; 200x60; 300x60; 400x60;
500x60; 600x60; 100x80; 150x80; 200x80; 300x80; 400x80; 500x80; 600x80;
150x100; 200x100; 300x100; 400x100; 500x100; 600x100.

Finishes: PG; HDG

Characteristics of the cable tray:

- Metallic
- Non-flame propagating component
- System with electrical continuity
- Electrically conductive component
- Minimum temperature of -50 °C
- Maximum temperature of 150 °C
- With metallic coating, resistance to corrosion:
 - PG coating: class 3
 - HDG coating: class 6
- Impact strength: 20J



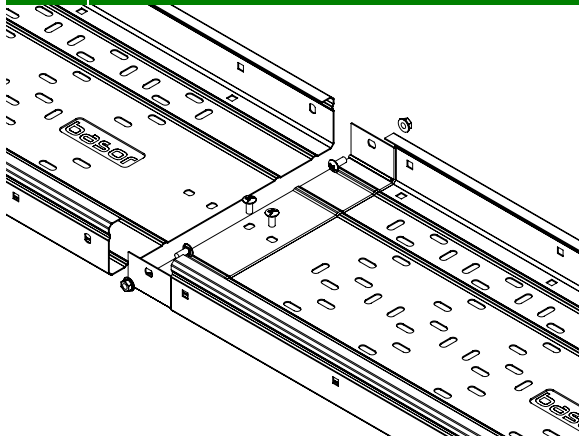
- Classification acc. to the free base area:

Non-drilled tray: A

Drilled tray:

Model	Classification
100	C
150	B
200	C
300	C
400	C
500	C
600	C

MOUNTING INSTRUCTIONS

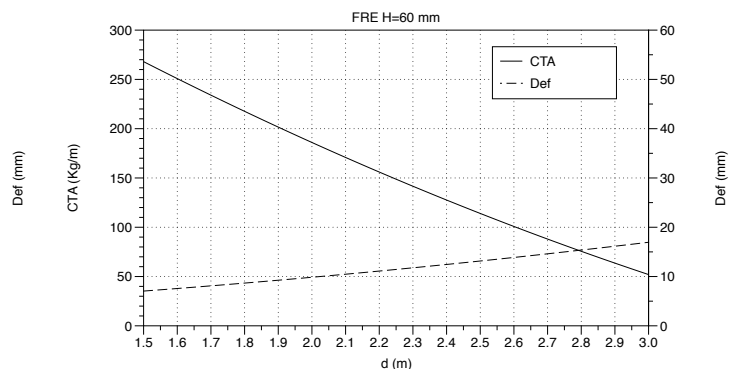
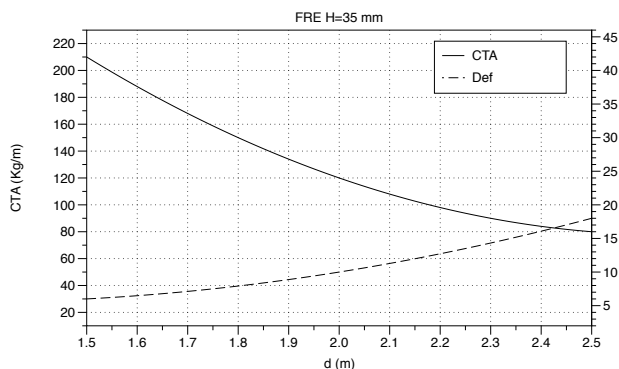


- Set up the self-assembly system 4 B1 bolt sets are needed for each cable tray and no union are needed.
- The tray installation for an electrical system should NOT run under other types of canalisations such as water, vapour or gas.
- To guarantee a good ventilation we recommend installing the trays keeping a minimum distance of 250 mm between each tray.
- Trays which are placed on supports shall have to keep a gap of 20 mm from the wall to allow for a correct ventilation of the cables.

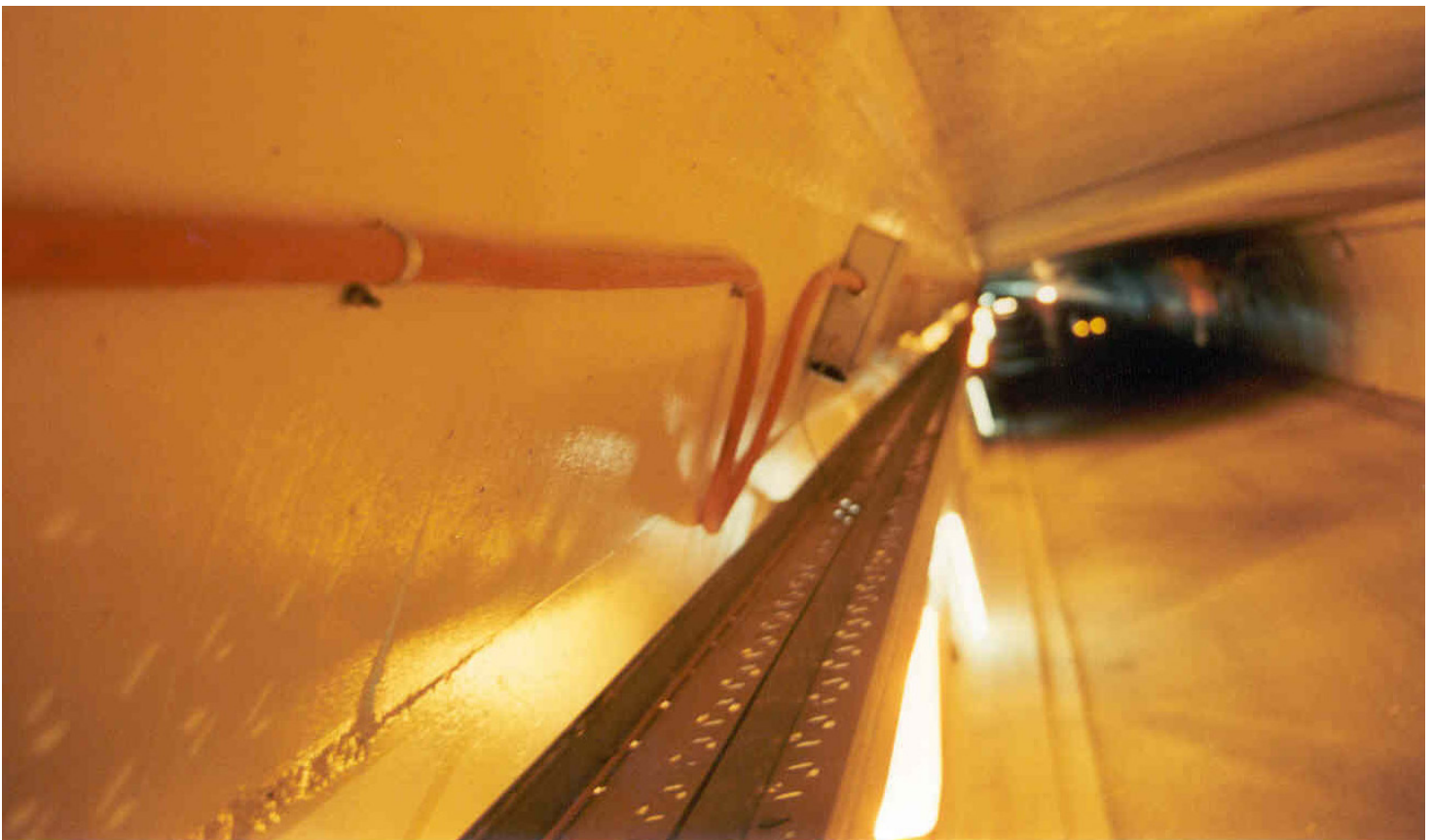
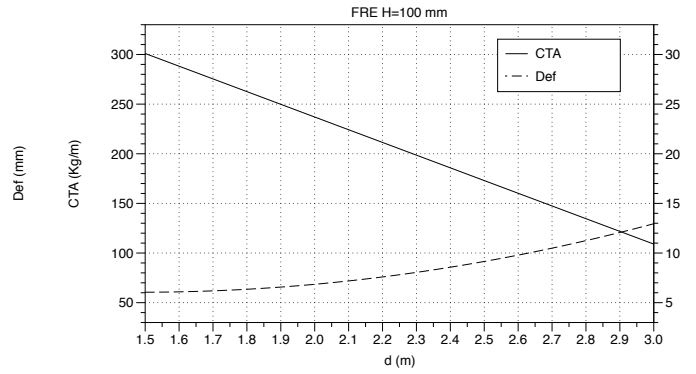
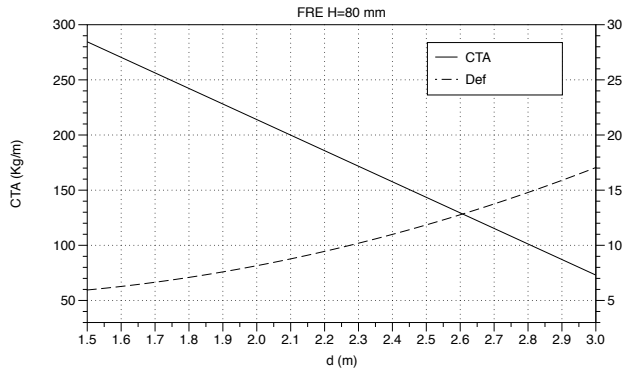
Accessories:

This family has large array of accessories: Cover, divider, horizontal bend, vertical inside/outside bends, T intersection, cross intersection, reduction, AS lateral derivation, union joint, articulated union joints.

SAFE WORKING LOAD



SAFE WORKING LOAD



Sizes & quantities
 100x60: 402 meters / 200x60: 13.563 meters / 300x60: 7.458 meters
 500x60: 63 meters / 600x60: 36 meters

21.522 meters

Experience Basor

Global tunnel sector

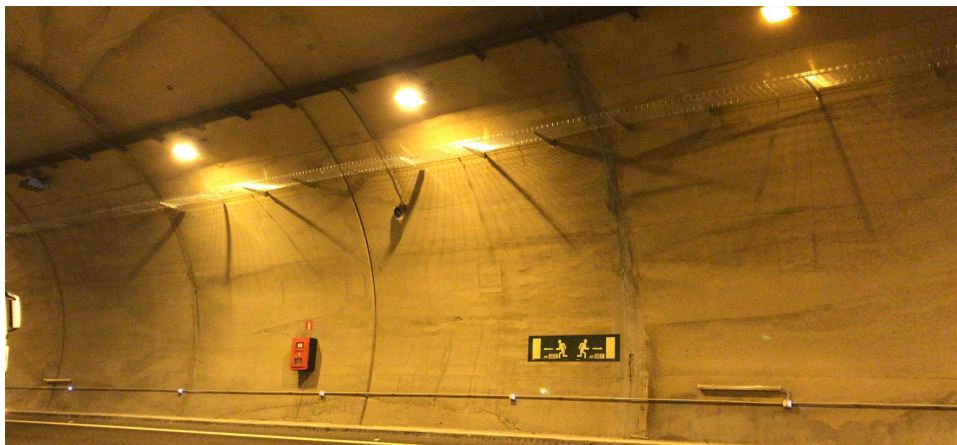
Projects	City	Country	Material
Mallorca Airport tunnel	Mallorca	Spain	Basorfil BFR GC-HDG
D'Arcalis tunnel	Ordino	Andorra	Basortray FRE GC-HDG
Valdebebas tunnel	Madrid	Spain	Basortray MRE PG
Zaouiat Ait Mellal tunnel	Marrakech	Morocco	Basortray ERE GC-HDG
Parpers tunnel	Barcelona	Spain	Basortrav FE GC-HDG
Mavao tunnel	Alentejo	Portugal	Basortray MRE PG
Zaldivar tunnel	Zaldivar	Spain	Basortray MRE PG
Djebahia tunnel	Bouira	Argelia	Basorfil BFR GC-HDG
Pio XII tunnel	Madrid	Spain	Basorfil BFR GC-HDG
Ping Tung tunnel	Taipei	R.O.C	Basorplast BPI PVCM1
Jarrio tunnel	Navia	Spain	Basortray FRE GC-HDG
Gibraltar Airport tunnel	Gibraltar	United Kingdom	Basorfil BFR GC-HDG
Peña Maria tunnel	Treviño	Spain	Basortray MRE PG
Sor Angela de la Cruz tunnel	Madrid	Spain	Basortrav FE GC-HDG
Cristo Rey tunnel	Pozuelo	Spain	Basorfil BFR GC-HDG
Embajadores tunnel	Madrid	Spain	Basortray FRE GC-HDG
M-40 tunnel	Madrid	Spain	Basortray FRE GC-HDG
De la Rovira tunnel	Barcelona	Spain	Basortray ERE GC-HDG
New Alicante highway tunnels	Alicante	Spain	Basorfil BFR GC-HDG
Piqueras tunnel	Lumbreras	Spain	Basorplast BPI PVCM1
San Pedro tunnel	Colmenar viejo	Spain	Basortray FRE GC-HDG
Cadi services gallery tunnel	Sierra del Cadí	Spain	Basortrav FE GC-HDG
Luko tunnel	Luko	Spain	Basorfil BFR GC-HDG
Santa Isabel tunnel	Zaragoza	Spain	Basorplast BPI PVCM1
Piqueras-Agosa tunnel	Soria	Spain	Basortray FRE GC-HDG
De les Franqueses tunnel	Les Franqueses del Vallès	Spain	Basortray ERE GC-HDG
Santa Maria de la Cabeza tunne	Madrid	Spain	Basortray FRE GC-HDG
SE-40 tunnel	Madrid	Spain	Basortrav FE GC-HDG
Maria Cristina tunnel	Valencia	Spain	Basorfil BFR GC-HDG
Access tunnel AVE train to Valencia	Valencia	Spain	Basorplast BPI PVCM1
Access tunnel AVE train to Chamartin	Madrid	Spain	Basortray ERE GC-HDG
Trinitat tunnel	Barcelona	Spain	Basorfil BFR GC-HDG
Sabadell tunnel	Sabadell	Spain	Basorfil BFR GC-HDG
Del Horreo tunnel	Santiago	Spain	Basorplast BPI PVCM1
De Pedralba tunnel	Sabiñánigo	Spain	Basortray FRE GC-HDG
Bielsa tunnel	Huesca	Spain	Basorplast BPI PVCM1
Ave Madrid-Valencia high speed train tunnels	Madrid	Spain	Basortray FRE GC-HDG
Les Fosses tunnel	Gerona	Spain	Basortrav FE GC-HDG



Experience Basor

Global tunnel sector

Project	City	Country	Material
Romaguera tunnel	Sant Julià de Lòria	Spain	Basorfil BFR GC-HDG
Guardiola de Bergueda tunnel	Guardiola de Berguedà	Spain	Basorplast BPI PVCM1
De Nueno tunnel	Huesca	Spain	Basortray FRE GC-HDG
Sants-Sagrera tunnel	Barcelona	Spain	Basortray ERE GC-HDG
Carchuna and Fuentecilla tunnels	Granada	Spain	Basorfil BFR GC-HDG
Del Figaro tunnel	Barcelona	Spain	Basortray FRE GC-HDG
Das Maceiras tunnel	Vigo	Spain	Basortrav FE GC-HDG
Tunnel L5 FGV	Valencia	Spain	Basorfil BFR GC-HDG
Ave Merida-Plasencia high speed train tunnels	Mérida	Spain	Basorplast BPI PVCM1
La Aldeal del Risco tunnel	Gran Canaria	Spain	Basorfil BFR GC-HDG
Langreo tunnel	Langreo	Spain	Basorplast BPI PVCM1
Cantalobos tunnel	Taramany	Spain	Basorfil BFR GC-HDG
La Minilla tunnel	Granada	Spain	Basortray ERE GC-HDG
Santiuste-Goyastur tunnel	Unquera	Spain	Basorfil BFR GC-HDG
Negron tunnel	León	Spain	Basortray MRE PG
monnaber tunnel	Soller	Spain	Basorplast BPI PVCM1
El Parrote tunnel	La Coruña	Spain	Basortray ERE GC-HDG
External access tunnel Coruña	La Coruña	Spain	Basortrav FE GC-HDG
M14 tunnel	Madrid	Spain	Basorplast BPI PVCM1
Malaga Ausol tunnel	Málaga	Spain	Basortray ERE GC-HDG
Paracuellos tunnel	Paracuellos del Jarama	Spain	Basorfil BFR GC-HDG
El Corzo tunnel	Jaen	Spain	Basorplast BPI PVCM1
Somport tunnel	Huesca	Spain	Basortray FRE GC-HDG



BEGREEN
CableManagementSystems

BE Basor
CABLE TRAY SPECIALIST

BASOR ELECTRIC S.A Headquarters

Avenida Alcodar 45-47
46701 Gandia SPAIN

+34 962876695
basor@basor.com
www.basor.com


@basorelectric


[www.linkedin.com/
company/basor-electric-sa](https://www.linkedin.com/company/basor-electric-sa)


[www.youtube.com/user/
basorelectric](https://www.youtube.com/user/basorelectric)