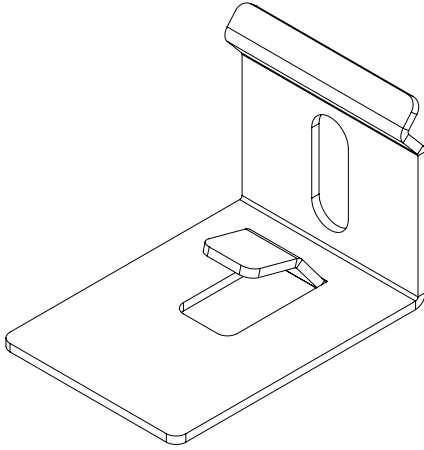




SUPPORT SPBF

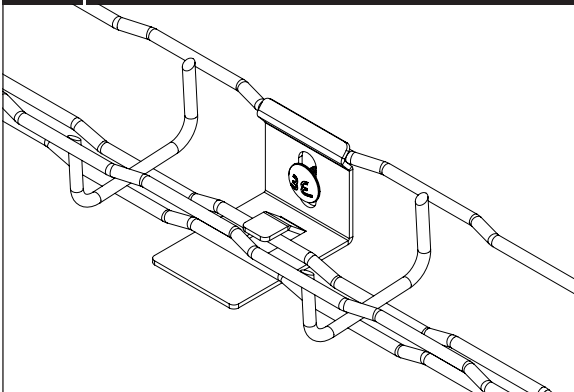


Finishes: PG, SS304.

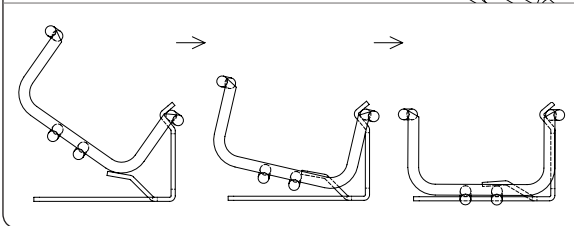
Characteristics:

- Metallic
- Non-flame propagating component
- System with electrical continuity
- Electrically conductive component
- Minimum temperature of -50°C
- Maximum temperature of 150°C
- With metallic coating, resistance to corrosion:
PG coating: class 3
SS304 coating: class 9A

ASSEMBLING INSTRUCTIONS



- The wall support SPBF is perfect for setting wall installations trays BASORFIL 60x35 and 100x35.
- The support has 7,5mm holes for anchors or M6 hardware.
- To assembly the tray to the ceiling suspension, firstly introduce the top rod of the tray on the side tab and then turn it to enter the base rod. Once introduced both tabs, press both tabs lightly with pliers to get adequate fixation.
- Maximum recommended distance between fixing points 1,5 m.
- Is recommended to install the union joints between L/4 to L/5 of the distance between supports.



SAFE WORKING LOAD

