

# BASORFIL

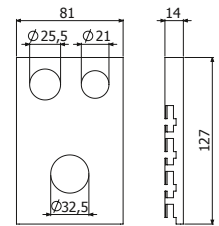
## STB

drawn in mm.



DESCRIPTION	PREGALVANIZED			HOT DIP GAVANIZED			STAINLESS STEEL 304			STAINLESS STEEL 316		
	REF.	kg/ud	LBS/unit	REF.	kg/ud	LBS/unit	REF.	kg/ud	LBS/unit	REF.	kg/ud	LBS/unit
STB	2/0356	0,14	0,308	2/0366	0,14	0,308	2/0376	0,14	0,308	UR	0,14	0,308

Allows the fixation of conduits to the cables outlet. You can see section cable management systems insulation conduit.



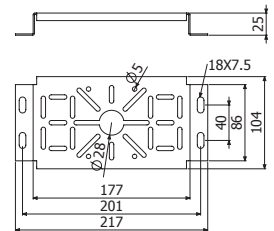
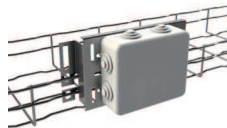
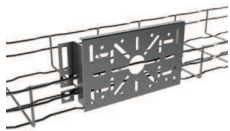
## UNIVERSAL SUPPORT BOX

drawn in mm.



DESCRIPTION	PREGALVANIZED			HOT DIP GAVANIZED			STAINLESS STEEL 304			STAINLESS STEEL 316		
	REF.	kg/ud	LBS/unit	REF.	kg/ud	LBS/unit	REF.	kg/ud	LBS/unit	REF.	kg/ud	LBS/unit
Universal Support Box	2/0358	0,28	0,62	2/0368	0,28	0,62	2/0378	0,28	0,62	UR	0,28	0,62

Designed to allow the fixing of boxes to BASORFIL trays series.



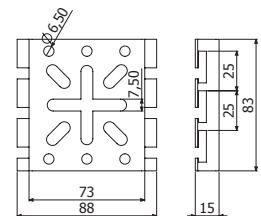
## MINI UNIVERSAL SUPPORT BOX

drawn in mm.



DESCRIPTION	PREGALVANIZED			HOT DIP GAVANIZED			STAINLESS STEEL 304			STAINLESS STEEL 316		
	REF.	kg/ud	LBS/unit	REF.	kg/ud	LBS/unit	REF.	kg/ud	LBS/unit	REF.	kg/ud	LBS/unit
Mini Universal Support Box	2/0359	0,08	0,176	2/0369	0,12	0,264	2/0379	0,08	0,264	UR	0,08	0,264

Designed to allow the fixing of boxes to BASORFIL trays series.



UR=Upon Request