

DROP-OUT PLATE

drawn in mm.



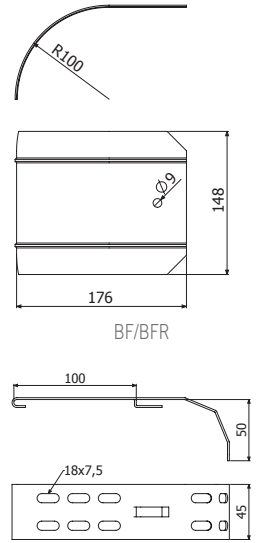
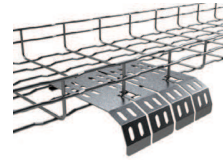
BF/BFR

DESCRIPTION	PREGALVANIZED			HOT DIP GALVANIZED		
	REF.	kg/ud	LBS/unit	REF.	kg/ud	LBS/unit
BF/BFR Drop-Out Plate	2/6451	0,18	0,40	2/6452	0,20	0,40
BF/BFR Mini Drop-Out Plate	2/9807	0,11	0,25			

To assemble drop-out plate with cable trays it's necessary to use a SSC, a bolt M8x1" DIN933 EZ (reference 0/0310) and a serrated nut DIN6923 EZ) (reference 0/0338).



BF/BFR Mini



BF/BFR Mini

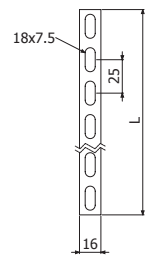
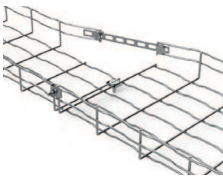
MULTI UNION JOINT

drawn in mm.



DESCRIPTION	PREGALVANIZED			HOT DIP GALVANIZED			STAINLESS STEEL 304			STAINLESS STEEL 316		
	REF.	kg/ud	LBS/unit	REF.	kg/ud	LBS/unit	REF.	kg/m	LBS/FT	REF.	kg/m	LBS/FT
MU	2/0357	0,05	0,11	-	0,05	0,11	2/9872	0,06	0,11	2/14244	0,06	0,11
MU 275	2/10007	0,05	0,11									

Supplement used in the workplace for construction of accessories (vertical inside/outside, reduction, etc.)



CLIP FIL



DESCRIPTION	REF.
CFBFR41	2/10284

Supplement used in the workplace for construction of accessories (vertical inside/outside, reduction, etc.)

ZINC SPRAY PAINT



DESCRIPTION	REF.
98% Zinc Spray Paint	2/7224

Contains 90% Zinc in dry film.
For optimum protection against corrosion, the cuts should be coated with zinc paint.

ASYMMETRIC CUTTING PLIERS



DESCRIPTION	REF.
Cutting Pliers	2/5066

UR=Upon Request