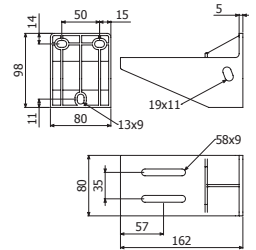


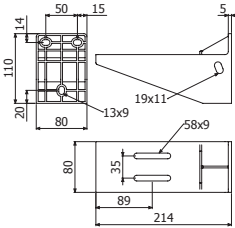
SHG



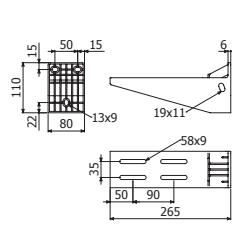
	B		40°	60°	PVC		PVC M1 UV	
	mm	inch	CTA (kg)	CTA (kg)	REF.	kg/ud	REF.	kg/ud
SHG 100	100	4"	90	45	2/6779	0,19	2/10011	0,19
SHG 150	150	6"	105	52,5	2/6780	0,27	2/10012	0,27
SHG 200	200	8"	120	60	2/6781	0,34	2/10013	0,34
SHG 300	300	12"	130	65	2/6782	0,54	2/10014	0,54
SHG 400	400	16"	220	110	2/7134	0,82	2/10015	0,95
SHG 600	600	24"	180	90	2/7135	1,01	2/10016	1,10



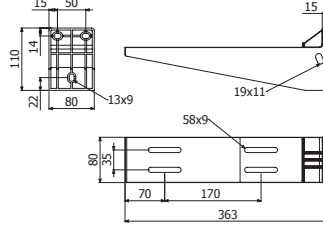
SHG100



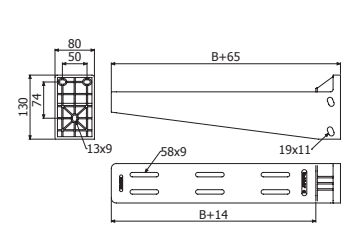
SHG150



SHG200



SHG300



SHG 400/600

PSHG



PSHG PAS SHG	GSP / i304	
	REF.	kg/ud
	2/7203	2,29
	2/7228	0,11

- 1 CP SHG i304 (2/7228)
- 1 M10x100 DIN 931 + 1 M10 DIN6923.

